

Base station communication silver line





Overview

What is a base station in a telecommunications network?

A base station is a critical component in a telecommunications network. A fixed transceiver that acts as the central communication hub for one or more wireless mobile client devices. In the context of cellular networks, it facilitates wireless communication between mobile devices and the core network.

What is a mobile base station?

A mobile base station, also called a base transceiver station (BTS), is a fixed radio transceiver in any mobile communication network or wide area network (WAN). The base station connects mobile devices to the network and routes them to other terminals in the network or to the core network of a mobile operator. Read more [Explore Mobile base](#).

How does a base station communicate with a client device?

Generally, if client devices wanted to communicate to each other, they would communicate both directly with the base station and do so by routing all traffic through it for transmission to another device. Base stations in cellular telephone networks are more commonly referred to as cell towers.

Why are base stations important in cellular communication?

Base stations are important in the cellular communication as it facilitate seamless communication between mobile devices and the network communication. The demand for efficient data transmission are increased as we are advancing towards new technologies such as 5G and other data intensive applications.



Base station communication silver line



Base Stations

Jul 23, 2025 · Base stations form a key part of modern wireless communication networks because they offer some crucial advantages, ...

[Base station communication silver line](#)

It provides two-way voice communication of high quality. What is a base station in a cellular network? Base Stations A base station, often housed within a cell site, is the central point in a ...



[Communication Base Station Power Backup Units](#)

Jul 15, 2024 · The Silent Guardians of Connectivity When typhoons knock out power grids or extreme temperatures strain energy systems, communication base station power backup units ...

[Energy Storage for Communication Base](#)

The one-stop energy storage system for communication base stations is specially designed for base station energy storage. Users can use the energy storage system to discharge during ...



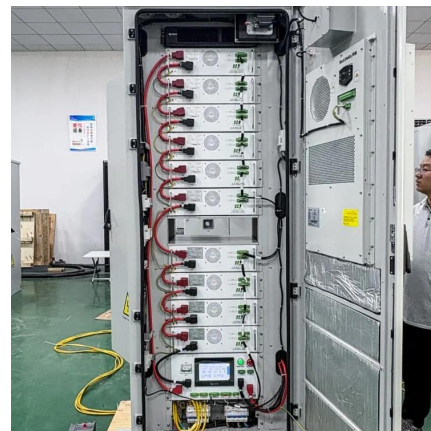
Smart Power of Communication Base Station

Real-time Monitoring of Line Operation Status
Installing a smart switch module at an unattended basic station, the smart switch module can collect data in real time and use the data to display ...



What is a Base Station in ...

What is a Base Station? A base station is a critical component in a telecommunications network. A fixed transceiver that acts as the central ...



What Is A Base Station?

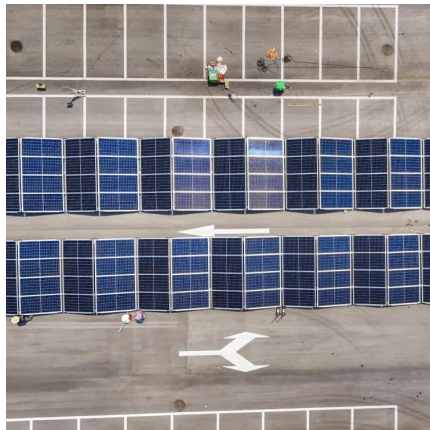
Apr 22, 2024 · A base station is an integral component of wireless communication networks, serving as a central point that manages the transmission and reception of signals between ...





What is a base station?

Mar 4, 2021 · In telecommunications, a base station is a fixed transceiver that is the main communication point for one or more wireless mobile client devices.



Mobile base station , Application

Explore STMicroelectronics' mobile base station solutions, enhancing connectivity and performance for telecom networks.

Base stations and networks

5 days ago · Mobile phones and mobile devices require a network of radio base stations to function. Radio waves have been used for communication for more than 100 years.



Base Stations

Jul 23, 2025 · Base stations form a key part of modern wireless communication networks because they offer some crucial advantages, such as wide coverage, continuous communications and ...



Mobile base station , Application

Explore STMicroelectronics' mobile base station solutions, enhancing connectivity and performance for telecom networks.



What is a Base Station in Telecommunications?

What is a Base Station? A base station is a critical component in a telecommunications network. A fixed transceiver that acts as the central communication hub for one or more wireless mobile ...

What is a base station?

Mar 4, 2021 · In telecommunications, a base station is a fixed transceiver that is the main communication point for one or more wireless mobile client ...



Contact Us

For technical specifications, project proposals, or partnership inquiries, please visit:
<https://www.eiei.pl>



Scan QR Code for More Information



<https://www.eiei.pl>