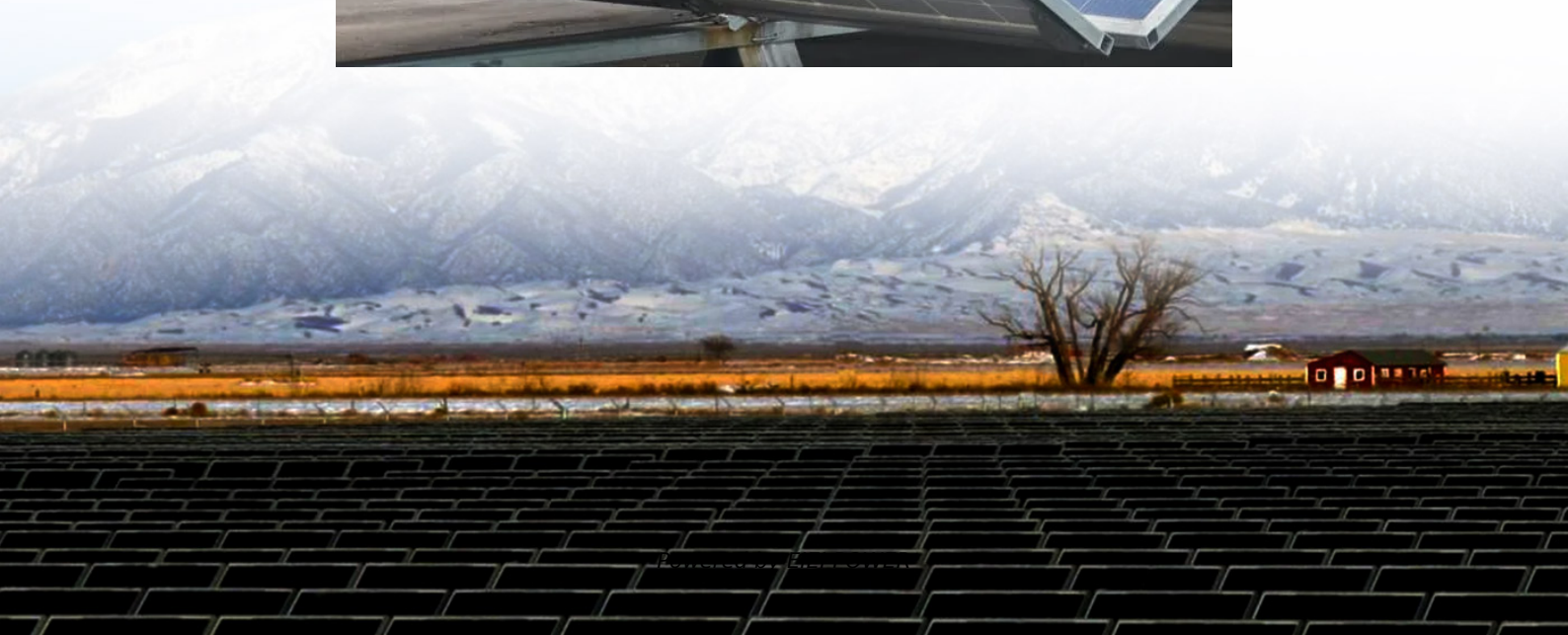


Base station communication equipment line connection





Overview

What is a base station in a telecommunications network?

A base station is a critical component in a telecommunications network. A fixed transceiver that acts as the central communication hub for one or more wireless mobile client devices. In the context of cellular networks, it facilitates wireless communication between mobile devices and the core network.

What is the main base station equipment connection diagram?

The Core Layout: Main Base Station Equipment Connection Diagram The connection diagram provides a clear overview of how the main base station equipment operates within the network. Surrounding this central "brain" are the "Four Guardians" that ensure seamless functionality:.

What are the components of a base station?

The base station will have one or more RF antennas installed to transmit and receive RF signals from other devices. The block diagram of a base station typically includes the following key components: Baseband Processor: The baseband processor too deals with different communication protocols and interfaces with mobile network infrastructure.

What equipment does a base station need?

Control Equipment: Base stations include control equipment that manages the communication protocols and coordinates the interaction between mobile devices and the network. This equipment ensures that data is routed correctly and efficiently. Power Supply: A reliable power supply is essential for the continuous operation of a base station.



Base station communication equipment line connection



[What is a Base Station? -- From Communication Core to ...](#)

Aug 19, 2025 · The base station is an indispensable piece of infrastructure in the mobile communication network, silently supporting every phone call, message, and network ...

[What is Telecommunication Base Station , China Hop](#)

What is telecommunication base station, let's learn about communication base stations. China telecom equipment supplier.



EMF

Some base stations have radio communications dishes (shaped like a drum) that connect the base station to the rest of the base station network. top What are 2G and 3G networks? 3G, or ...

[What Is A Base Station?](#)

Apr 22, 2024 · A base station is an integral component of wireless communication networks, serving as a central point that manages the transmission and reception of signals between ...



[Complete Guide to 5G Base Station ...](#)

Nov 17, 2024 · 1. Power Source: Mains Power Input Where does the electricity for communication base stations come from? It starts from large ...



[What is a Base Station in ...](#)

What is a Base Station? A base station is a critical component in a telecommunications network. A fixed transceiver that acts as the central ...



Base Stations

Jul 23, 2025 · Backhaul Connection: The backhaul connection links the base station to the core network in the mobile communication system. It ...





Solutions for Base Station Components , Syensqo

Dec 4, 2025 · Our solutions for base stations components enable manufacturers to create high performing components for advanced communication.



EMF

Some base stations have radio communications dishes (shaped like a drum) that connect the base station to the rest of the base station network. top ...

Complete Guide to 5G Base Station Construction , Key Steps, Equipment

Nov 17, 2024 · 1. Power Source: Mains Power Input Where does the electricity for communication base stations come from? It starts from large power plants and flows through substations, ...



Baseband Unit (BBU)

The baseband unit (BBU) is a crucial component in mobile base stations, handling tasks like signal processing, resource allocation, and protocol ...



Baseband Unit (BBU)

The baseband unit (BBU) is a crucial component in mobile base stations, handling tasks like signal processing, resource allocation, and protocol management to ensure efficient ...

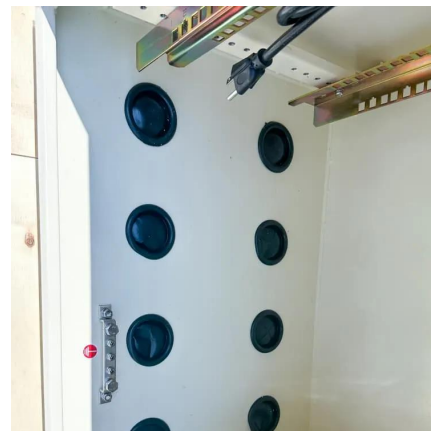


[The communication base station architecture development ...](#)

Jan 17, 2023 · Each BBU can connect 10-100 RRUs, further reducing the network deployment cycle and cost. Different from traditional distributed base stations, C-RAN breaks the fixed ...

Base Stations

Jul 23, 2025 · Backhaul Connection: The backhaul connection links the base station to the core network in the mobile communication system. It provides for the interchange of data between ...



[What is a Base Station in Telecommunications?](#)

What is a Base Station? A base station is a critical component in a telecommunications network. A fixed transceiver that acts as the central communication hub for one or more wireless mobile ...



Contact Us

For technical specifications, project proposals, or partnership inquiries, please visit:
<https://www.eiei.pl>

Scan QR Code for More Information



<https://www.eiei.pl>