

# **Base station communication equipment and terminals**





## Overview

---

What is a base station in telecommunications?

In telecommunications, a base station is a fixed transceiver that serves as the main communication point for one or more wireless mobile client devices. It not only connects wireless devices to each other but also links them to other networks or devices, often through dedicated high-bandwidth wired or fiber optic connections.

What are base stations & how do they work?

Base stations are the critical components that enable mobile phones and other devices to connect to cellular networks. Here's how they work in a typical mobile network: Signal Transmission and Reception: Mobile devices communicate with the nearest base station via radio waves.

What is a mobile base station?

A mobile base station, also called a base transceiver station (BTS), is a fixed radio transceiver in any mobile communication network or wide area network (WAN). The base station connects mobile devices to the network and routes them to other terminals in the network or to the core network of a mobile operator. Read more [Explore Mobile base](#).

What is a base station in a cellular network?

It acts as the intermediary between the mobile device and the broader telecommunications network, facilitating both data transfer and voice communication. In cellular networks, a base station typically consists of antennas, a transmitter/receiver system, and a base station controller (BSC).



## Base station communication equipment and terminals

---

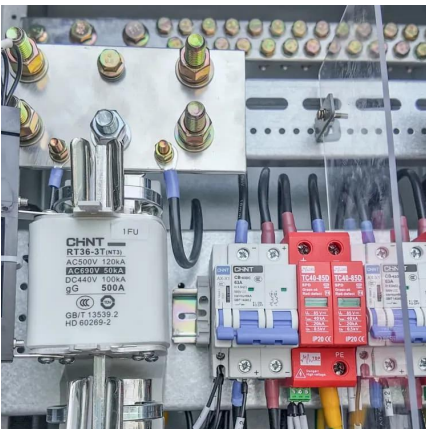


### Base Station Equipment - Types and Applications of Mobile Communication

« Base Station Technology: An Overview » by IEEE Communications Magazine: This article provides a general overview of different base station types, their functions, and the ...

### Baseband Unit (BBU)

The baseband unit (BBU) is a crucial component in mobile base stations, handling tasks like signal processing, resource allocation, and protocol management to ensure efficient ...

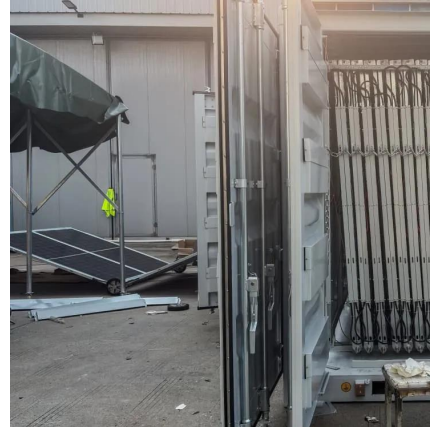


### [What Is A Base Station?](#)

Apr 22, 2024 · A base station is an integral component of wireless communication networks, serving as a central point that manages the transmission and reception of signals between ...

### [What Does a Base Station Do and Why Is It Essential for ...](#)

Sep 5, 2025 · A base station is a fixed point of communication between mobile devices and the wider telecom network. It transmits and receives radio signals, enabling your phone to access ...



### Mobile base station , Application

A mobile base station, also called a base transceiver station (BTS), is a fixed radio transceiver in any mobile communication network or wide area network (WAN). The base station connects ...



## Base Stations

Jul 23, 2025 · The present-day tele-space is incomplete without the base stations as these constitute an important part of the modern-day scheme of wireless communications. They are ...



### The Base Station in Wireless Communications: ...

Nov 10, 2023 · Base station, also known as BTS (Base Transceiver Station), is a key device in wireless communication systems such as GSM. ...





## Understanding Base Stations: The Backbone of Wireless Communication

Jan 6, 2025 · In today's digital age, reliable and high-speed communication is more essential than ever. Whether it's for mobile phones, internet services, or IoT (Internet of Things) devices, ...



### Baseband Unit (BBU)

The baseband unit (BBU) is a crucial component in mobile base stations, handling tasks like signal processing, resource allocation, and protocol ...

### What is a Base Station? -- From Communication Core to ...

Aug 19, 2025 · What is a base station? Simply put, a base station (BS) is a wireless transceiver device in a mobile communication network that provides wireless coverage and communicates ...



### The Base Station in Wireless Communications: The Key to ...

Nov 10, 2023 · Base station, also known as BTS (Base Transceiver Station), is a key device in wireless communication systems such as GSM. Equipped with an electromagnetic wave ...



## VHF Base Stations for Long-Range Communication

What Is a VHF Base Station? A VHF (Very High Frequency) base station is a fixed communication device that operates within the 30 MHz to 300 MHz frequency range. Known ...



## Mobile base station , Application

A mobile base station, also called a base transceiver station (BTS), is a fixed radio transceiver in any mobile communication network or wide area ...

## Contact Us

---

For technical specifications, project proposals, or partnership inquiries, please visit:  
<https://www.eiei.pl>

**Scan QR Code for More Information**



<https://www.eiei.pl>