

Base station battery discharge





Overview

How does a battery group work in a base station?

The equipment in base stations is usually supported by the utility grid, where the battery group is installed as the backup power. In case that the utility grid interrupts, the battery discharges to support the communication switching equipment during the period of the power outage.

How long do base station batteries last?

After using BatAlloc to allocate suitable numbers of battery groups for base stations, the average battery lifetime has achieved to 4.3 years, roughly 1.8 times longer than that of the original allocation. The results indicate that our framework can also better protect base station batteries and significantly prolong their average lifetimes.

How do I choose a base station?

Key Factors: **Power Consumption:** Determine the base station's load (in watts). **Backup Duration:** Identify the required backup time (hours). **Battery Voltage:** Select the correct voltage based on system design. **Efficiency & Discharge Rate:** Consider battery efficiency and discharge characteristics.

What happens if a base station has multiple battery groups?

When a base station is equipped with multiple battery groups, the impact of activities is actually shared by all these batteries. Then the impact on every single battery should be proportionally reduced. In practice, there may be other requirements that limit the number of battery groups being installed at a base station.



Base station battery discharge

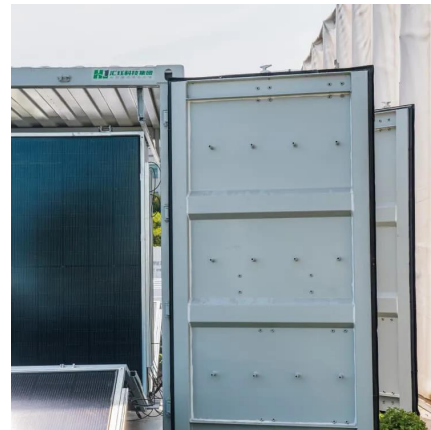


The main reason for the excessive discharge of the base station ...

Aug 16, 2018 · Lithium battery over-discharge mainly occurs after the AC power supply is cut off, and the lithium battery supplies power to the load for a long time. When the lithium battery is ...

[Backup Battery Analysis and Allocation against Power ...](#)

Jan 17, 2022 · Then we propose a deep learning based approach integrated with battery discharge features to model the battery reserve time and battery life-time for a base station ...



[How to Determine the Right Battery Capacity ...](#)

Mar 10, 2025 · Choosing the right battery capacity is essential to ensure sufficient backup power during outages. Key Factors: Power ...



The Reason for Shortening the Service Life of Base Station Batteries

Therefore, the current base station battery undervoltage protection reference voltage is set too low, such as group owners time power



failure, the battery will discharge occurred, even a ...



[Energy Storage for Communication Base](#)

The one-stop energy storage system for communication base stations is specially designed for base station energy storage. Users can use the energy storage system to discharge during ...



[Telecom Base Station Backup Power Solution: ...](#)

Jun 5, 2025 · Discover the 48V 100Ah LiFePO4 battery pack for telecom base stations: safe, long-lasting, and eco-friendly. Optimize reliability with ...



[\(PDF\) Performance Analysis of VRLA Battery ...](#)

Oct 22, 2021 · This has shortened the battery life at the Base Station (BTS). This study aims to analyze the performance of a (new) VRLA battery ...





(PDF) Performance Analysis of VRLA Battery for DC Load at

Oct 22, 2021 · This has shortened the battery life at the Base Station (BTS). This study aims to analyze the performance of a (new) VRLA battery against a DC load (BTS) to support the ...

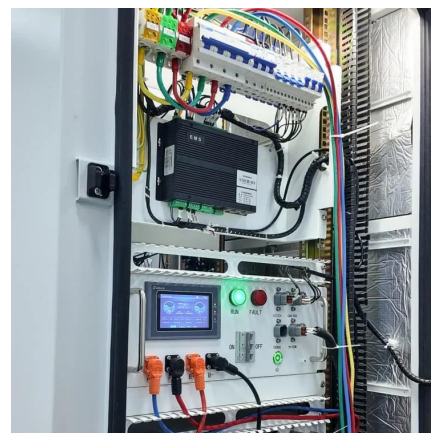


Can telecom lithium batteries be used in 5G telecom base stations?

Jul 1, 2025 · In a 5G base station environment, where backup power may only be needed occasionally, a low self - discharge rate ensures that the battery is ready to provide power ...

Base station lead-acid battery charge and discharge times

Lifetime Prediction of Lead-Acid Batteries in Base-Transceiver Station . & #215; The period is the discharge time for the battery to reach its 80% capacity. By substituting the ordinate value ...



How to Determine the Right Battery Capacity for Telecom Base Stations

Mar 10, 2025 · Choosing the right battery capacity is essential to ensure sufficient backup power during outages. Key Factors: Power Consumption: Determine the base station's load (in ...



[5G Base Station Lithium Battery: Capacity and Discharge ...](#)

Sep 26, 2025 · Typical Values: 5G Macro Station: Continuous discharge up to 500A. Urban Small Cell: Peak discharge up to 150A. EverExceed's high-rate discharge LiFePO4 batteries are ...



[Telecom Base Station Backup Power Solution: Design Guide ...](#)

Jun 5, 2025 · Discover the 48V 100Ah LiFePO4 battery pack for telecom base stations: safe, long-lasting, and eco-friendly. Optimize reliability with our design guide.

Contact Us

For technical specifications, project proposals, or partnership inquiries, please visit: <https://www.eiei.pl>

[Scan QR Code for More Information](#)



<https://www.eiei.pl>