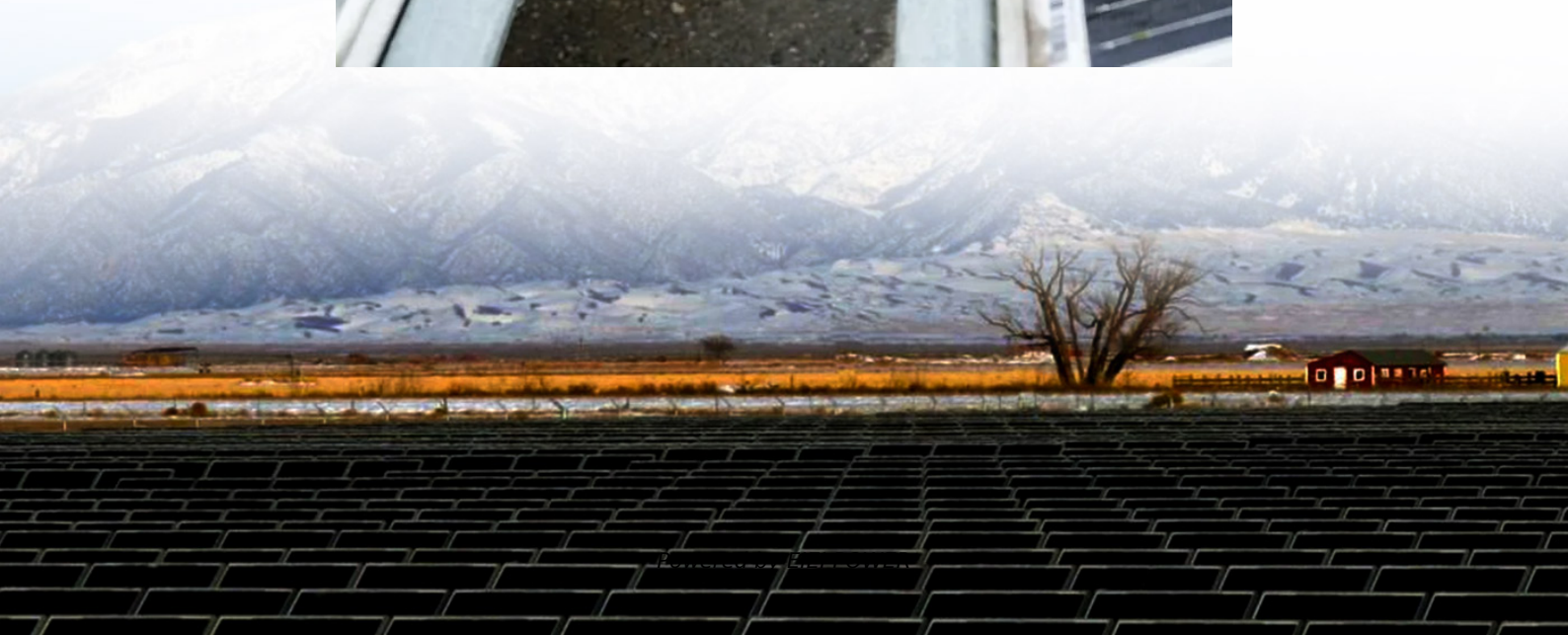


Base station backup battery weight





Overview

Why do cellular base stations have backup batteries?

Abstract: Cellular base stations (BSs) are equipped with backup batteries to obtain the uninterruptible power supply (UPS) and maintain the power supply reliability. While maintaining the reliability, the backup batteries of 5G BSs have some spare capacity over time due to the traffic-sensitive characteristic of 5G BS electricity load.

Which battery is best for telecom base station backup power?

Among various battery technologies, Lithium Iron Phosphate (LiFePO₄) batteries stand out as the ideal choice for telecom base station backup power due to their high safety, long lifespan, and excellent thermal stability.

What is a battery backup power station?

A battery backup power station is the perfect disaster prep solution, ensuring that you always have access to electricity and the ability to keep your devices charged. Goal Zero offers a wide variety of options to meet your needs.

What makes a telecom battery pack compatible with a base station?

Compatibility and Installation Voltage Compatibility: 48V is the standard voltage for telecom base stations, so the battery pack's output voltage must align with base station equipment requirements. Modular Design: A modular structure simplifies installation, maintenance, and scalability.



Base station backup battery weight



[Telecom Base Station Backup Power Solution: Design Guide ...](#)

Jun 5, 2025 · Discover the 48V 100Ah LiFePO4 battery pack for telecom base stations: safe, long-lasting, and eco-friendly. Optimize reliability with our design guide.

[5G Micro Base Station Lithium Battery Backup](#)

This 5G Micro Base Station Power Supply offers dependable lithium battery backup in a compact, high-efficiency format. Built with LiFePO4 chemistry, it delivers long-lasting power for critical ...



The 200Ah communication base station backup power lead-acid battery

GEM Battery GF series communication base station lead-acid batteries are used for telecom communication backup power supply, support multi-channel parallel connection, good ...

[The 200Ah communication base station ...](#)

GEM Battery GF series communication base station lead-acid batteries are used for telecom communication backup power supply, support multi ...



[Communication Base Station Backup Battery](#)

High-capacity energy storage solutions, specifically designed for communication base stations and weather stations, with strong weather resistance to ensure continuous operation of ...



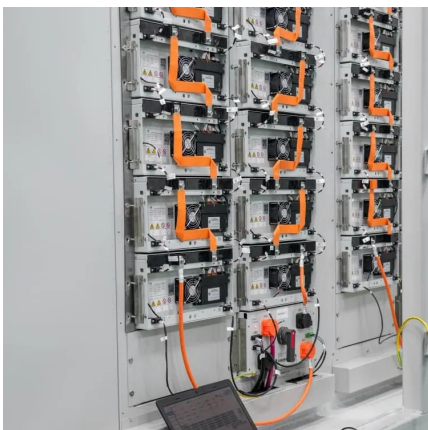
[Lithium Storage Base Station Weight , Huijue Group E-Site](#)

Why Weight Matters in Modern Infrastructure
Have you ever considered how lithium storage base station weight impacts 5G deployment costs? As global telecom operators installed 1.2 million ...



[Telecom Base Station Backup Power Solution: ...](#)

Jun 5, 2025 · Discover the 48V 100Ah LiFePO4 battery pack for telecom base stations: safe, long-lasting, and eco-friendly. Optimize reliability with ...





How to Choose the Right Backup Battery for Telecom Base Stations

Sep 15, 2025 · A telecom base station backup battery is the safeguard that keeps communication flowing when the grid fails. But not all backup batteries are created equal. Choosing the right ...



[How to Determine the Right Battery Capacity ...](#)

Mar 10, 2025 · Example: If a base station consumes 500W and needs 4 hours of backup at 48V, the required capacity is: $500W \times 4h / 48V = 41.67Ah$...



[LI-ION BATTERY SOLUTION FOR TELECOM BASE STATION](#)

Jan 29, 2016 · LI-ION BATTERY SOLUTION FOR TELECOM BASE STATION Samsung SDI's safe, proven and the most reliable solution for telecom industry Meet Samsung SDI's newest ...



Evaluating the Dispatchable Capacity of Base Station Backup Batteries

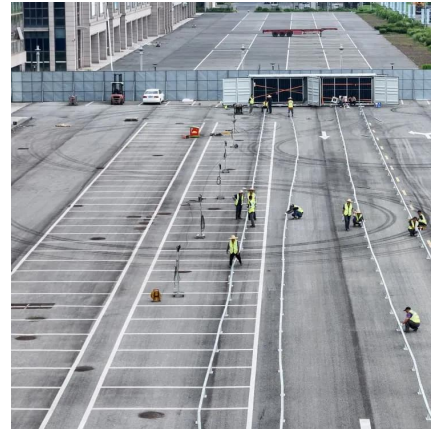
Apr 21, 2021 · Cellular base stations (BSs) are equipped with backup batteries to obtain the uninterruptible power supply (UPS) and maintain the power supply reliability. While ...





How to Determine the Right Battery Capacity for Telecom Base Stations

Mar 10, 2025 · Example: If a base station consumes 500W and needs 4 hours of backup at 48V, the required capacity is:
 $500W \times 4h / 48V = 41.67Ah$ Choosing a battery with a slightly higher ...



[HIGHSTAR Telecom Base Station Backup Power](#)

Reliable Backup Power for Telecom Base Stations: This HIGHSTAR Telecom Base Station Backup Power 3U LiFePO4 10KW 48V75Ah powerwall Battery pack is designed to provide ...



[5G Micro Base Station Lithium Battery Backup](#)

This 5G Micro Base Station Power Supply offers dependable lithium battery backup in a compact, high-efficiency format. Built with LiFePO4 chemistry, ...

Contact Us

For technical specifications, project proposals, or partnership inquiries, please visit:
<https://www.eiei.pl>



Scan QR Code for More Information



<https://www.eiei.pl>