

Base station backup battery life





Overview

Why do cellular base stations have backup batteries?

Abstract: Cellular base stations (BSs) are equipped with backup batteries to obtain the uninterruptible power supply (UPS) and maintain the power supply reliability. While maintaining the reliability, the backup batteries of 5G BSs have some spare capacity over time due to the traffic-sensitive characteristic of 5G BS electricity load.

Which battery is best for telecom base station backup power?

Among various battery technologies, Lithium Iron Phosphate (LiFePO₄) batteries stand out as the ideal choice for telecom base station backup power due to their high safety, long lifespan, and excellent thermal stability.

What is a battery backup power station?

A battery backup power station is the perfect disaster prep solution, ensuring that you always have access to electricity and the ability to keep your devices charged. Goal Zero offers a wide variety of options to meet your needs.

Why is backup power important in a 5G base station?

With the rapid expansion of 5G networks and the continuous upgrade of global communication infrastructure, the reliability and stability of telecom base stations have become critical. As the core nodes of communication networks, the performance of a base station's backup power system directly impacts network continuity and service quality.



Base station backup battery life



[Telecom Base Station Backup Power Solution: Design Guide ...](#)

Jun 5, 2025 · Discover the 48V 100Ah LiFePO4 battery pack for telecom base stations: safe, long-lasting, and eco-friendly. Optimize reliability with our design guide.

How to Choose the Right Backup Battery for Telecom Base Stations

Sep 15, 2025 · Choosing the right telecom base station backup battery is a strategic decision that goes beyond upfront cost. Operators must weigh factors such as voltage requirements, cycle ...



[Optimal configuration of 5G base station energy storage](#)

Jun 21, 2025 · The high-energy consumption and high construction density of 5G base stations have greatly increased the demand for backup energy storage batteries. To maximize overall ...



[Telecom Base Station Backup Power Solution: ...](#)

Jun 5, 2025 · Discover the 48V 100Ah LiFePO4 battery pack for telecom base stations: safe, long-lasting, and eco-friendly. Optimize reliability with ...



Evaluating the Dispatchable Capacity of Base Station Backup Batteries

Apr 21, 2021 · Cellular base stations (BSs) are equipped with backup batteries to obtain the uninterruptible power supply (UPS) and maintain the power supply reliability. While ...

[Communication base station power lithium battery life](#)

Nov 24, 2025 · E3. What you should know about PACE Communications Base Stations. PACE Base Station BMS products are safe, reliable, long-life, stable, and have technical features ...



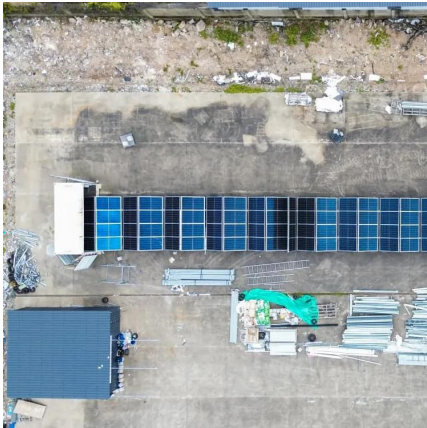
[Optimal Backup Power Allocation for 5G Base Stations](#)

May 17, 2022 · Optimal Backup Power Allocation for 5G Base Stations 4.1 Introduction Ilions of connections to IoT devices at the network edge [60]. As the first step shif ing to the 5G era, the ...



[On Backup Battery Data in Base Stations of Mobile ...](#)

Jan 17, 2022 · ABSTRACT Base stations have been massively deployed nowadays to afford the explosive demand to infrastructure-based mobile networking services, including both cellular ...

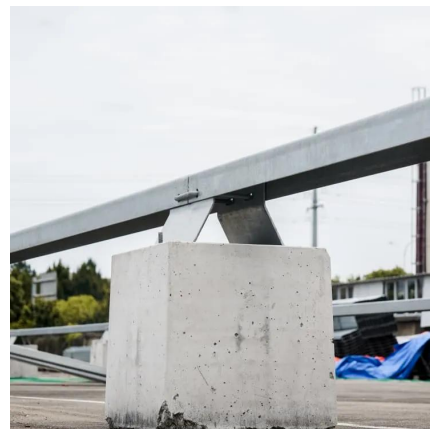


Understanding Backup Battery Requirements for Telecom Base Stations

Mar 7, 2025 · Telecom base stations require reliable backup power to ensure uninterrupted communication services. Selecting the right backup battery is crucial for network stability and ...

[Understanding Backup Battery Requirements ...](#)

Mar 7, 2025 · Telecom base stations require reliable backup power to ensure uninterrupted communication services. Selecting the right backup battery ...



What Are the Critical Aspects of Telecom Base Station Backup ...

Telecom base station backup batteries are essential for ensuring uninterrupted communication by providing reliable, long-lasting power during outages. Critical aspects include battery ...



Telecom Backup Battery Upgrade: ONESUN Provides the Most Stable Base

In today's era of 24-hour high load operation of communication base stations, the reliability of telecommunications backup power is directly related to the stability of network services. The

...



Contact Us

For technical specifications, project proposals, or partnership inquiries, please visit:
<https://www.eiei.pl>

Scan QR Code for More Information



<https://www.eiei.pl>