

Backup power battery for base station





Overview

Which battery is best for telecom base station backup power?

Among various battery technologies, Lithium Iron Phosphate (LiFePO₄) batteries stand out as the ideal choice for telecom base station backup power due to their high safety, long lifespan, and excellent thermal stability.

What is a battery backup power station?

A battery backup power station is the perfect disaster prep solution, ensuring that you always have access to electricity and the ability to keep your devices charged. Goal Zero offers a wide variety of options to meet your needs.

How do you charge a portable battery backup power station?

To charge a portable battery backup power station, you can plug it into a standard household outlet or use a car charger if available. These are the most common methods to charge the device.

What makes a telecom battery pack compatible with a base station?

Compatibility and Installation Voltage Compatibility: 48V is the standard voltage for telecom base stations, so the battery pack's output voltage must align with base station equipment requirements. **Modular Design:** A modular structure simplifies installation, maintenance, and scalability.



Backup power battery for base station

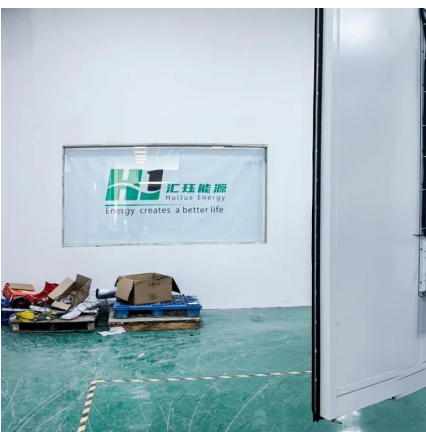


[Rack Lithium Battery Solutions for Telecom Base Stations](#)

Sep 19, 2025 · Rack lithium battery solutions for telecom base stations are modular, high-capacity lithium iron phosphate (LiFePO4) battery systems designed to fit standard 19 or 21-inch server ...

[Telecom Base Station Power Supply](#)

Our Telecom Base Station Power Supply solutions provide reliable and scalable backup power for telecom infrastructure. Developed through our Philippines telecom base station project, these ...



Understanding Backup Battery Requirements for Telecom Base Stations

Mar 7, 2025 · Telecom base stations require reliable backup power to ensure uninterrupted communication services. Selecting the right backup battery is crucial for network stability and ...

Telecom Backup Battery Upgrade: ONESUN Provides the Most Stable Base

In base station scenarios, power outages, environmental temperature changes, and



equipment aging can all lead to communication interruptions. If the backup battery system responds ...



How to Select the Best ESTEL Battery Backup for Base Stations

May 29, 2025 · Choose the best telecom battery backup systems by evaluating capacity, battery type, environmental adaptability, maintenance, and scalability for base stations.

Telecom Base Station Backup Power Solution: ...

Jun 5, 2025 · Discover the 48V 100Ah LiFePO4 battery pack for telecom base stations: safe, long-lasting, and eco-friendly. Optimize reliability with ...



Telecom Base Station Backup Power Solution: Design Guide ...

Jun 5, 2025 · Discover the 48V 100Ah LiFePO4 battery pack for telecom base stations: safe, long-lasting, and eco-friendly. Optimize reliability with our design guide.



[Securing Backup Power for Telecom Base Stations - leagend](#)

Mar 17, 2025 · One of the most critical components of any telecom base station is its backup power system. This article will explore in detail how to secure backup power for telecom base ...



[What Powers Telecom Base Stations During Outages?](#)

Feb 20, 2025 · Telecom batteries for base stations are backup power systems using valve-regulated lead-acid (VRLA) or lithium-ion batteries. They ensure uninterrupted connectivity ...

[Securing Backup Power for Telecom Base ...](#)

Mar 17, 2025 · One of the most critical components of any telecom base station is its backup power system. This article will explore in detail how ...



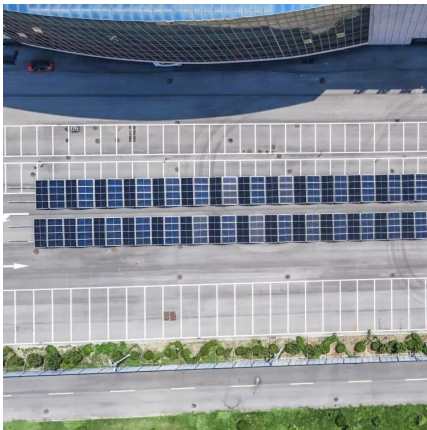
[Communication Base Station Backup Battery](#)

Communication and Base Station Backup Power Core Application Scenarios 5G micro base station 45V output meets RRU equipment requirements, automatically switches seamlessly ...



[Understanding Backup Battery Requirements ...](#)

Mar 7, 2025 · Telecom base stations require reliable backup power to ensure uninterrupted communication services. Selecting the right backup battery ...



How to Choose the Right Backup Battery for Telecom Base Stations

Sep 15, 2025 · A telecom base station backup battery is the safeguard that keeps communication flowing when the grid fails. But not all backup batteries are created equal. Choosing the right ...

Contact Us

For technical specifications, project proposals, or partnership inquiries, please visit:
<https://www.eiei.pl>

Scan QR Code for More Information



<https://www.eiei.pl>