

Angle of solar panels on flat roof





Overview

How to choose a tilt angle for solar panels on a flat roof?

Proper orientation and tilt adjustments play a significant role in enhancing the photovoltaic system's performance. Determining the ideal tilt angle for solar panels on a flat roof involves considering the geographic location and the roof's orientation.

Should solar panels be installed flat or sloped?

In fact, flat roof installations often outperform sloped roof systems when properly designed and installed. The key is understanding that panels should never be installed completely flat against the roof surface. Solar panels require a minimum tilt angle of 10 degrees to function optimally and maintain manufacturer warranties.

What angle should solar panels face?

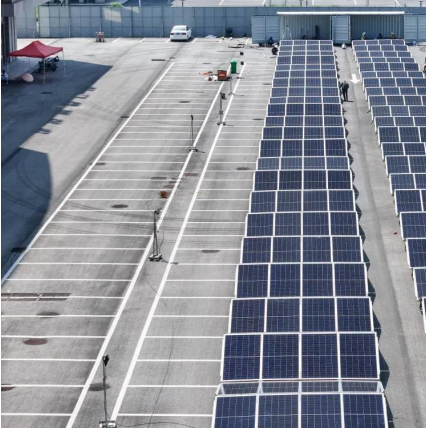
Ideally, solar panels should face south at an angle equal to their latitude, about 15 to 40 degrees. Flat roofs offer more flexibility than sloped roofs in terms of your solar panel system design. You can orient your panels to face south and mount them at the optimal angle to maximize your solar energy generation.

Can solar panels be laid flat?

Solar panels shouldn't be laid flat. To maximize their time in the sun, solar panels should ideally face south and tilt between 15 and 40 degrees. Most sloped roofs are in this angle range, which makes for an easy installation. But that doesn't mean that flat roofs aren't fit for solar, too.



Angle of solar panels on flat roof



[Flat Roof Mounting: Tilt Angles That Boost ...](#)

Sep 3, 2025 · This text explains how to determine the best tilt angles for your flat roof mounting system, balancing power generation with essential ...

[Flat Roof Mounting: Tilt Angles That Boost Yield and Safety](#)

Sep 3, 2025 · This text explains how to determine the best tilt angles for your flat roof mounting system, balancing power generation with essential safety considerations. Why Tilt Angle Is ...



[Flat Roof Solar Installation: Complete Guide ...](#)

Jul 8, 2025 · Complete guide to flat roof solar installation. Learn mounting methods, costs, benefits, and find qualified installers. Expert tips included.

[Can Solar Panels be Laid Flat on the Roof? \(or ...](#)

3 days ago · Yes, you can install solar panels flat, but they will experience a degree of energy loss without the slightest inclination towards the ...



[Installing Solar Panels on a Flat Roof \(3 Tips ...](#)

Dec 14, 2023 · Wondering if a solar system is possible on your flat roof? Click here to see why flat-roof systems are a great option, how to save on your ...



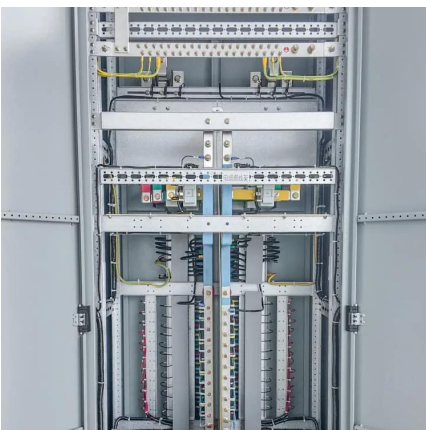
[How to Space Solar Panels on a Flat Roof?](#)

Dec 17, 2024 · Installing solar panels on a flat roof requires careful attention to spacing to maximize energy production and maintain the longevity of the system. The arrangement and ...



[Can you put Solar Panels on a Flat Roof?](#)

Jul 23, 2025 · We meet UK building regulations and planning rules, advise correctly on the best angle for solar panels UK-wide, and guarantee ...





[Solar Panels For Flat Roofs: Are They Right for You?](#)

Aug 8, 2025 · Solar panels shouldn't be laid flat. To maximize their time in the sun, solar panels should ideally face south and tilt between 15 and 40 degrees. Most sloped roofs are in this ...



Solar Panels on Flat Roof: Maximizing Sunlight and Efficiency

Apr 2, 2025 · Solar panels on flat roof offer flexible tilt angles and ballasted racking solutions. Maximize sunlight, drainage, and efficiency.



[Optimizing Roof Angle And Orientation For ...](#)

May 9, 2025 · Simple, flat roof designs offer the advantage of adjustable racks, allowing you to set the optimum tilt angle regardless of the roof's ...



How Does the Flat Roof Installation Solve the Problem of ...

Feb 24, 2025 · Our adjustable mounting systems allow you to fine-tune the tilt angle of your solar panels to ensure that they are positioned for optimal sun exposure. Whether you're installing ...





What Angle Should Solar Panels Be Mounted on a Flat Roof?-sic-solar...

Jul 16, 2025 · Installing solar panels on a flat roof offers excellent flexibility. Unlike pitched roofs, a flat surface allows you to choose the best tilt angle to optimize energy production. However, ...



[Solar Panels For Flat Roofs: Are They Right for ...](#)

Aug 8, 2025 · Solar panels shouldn't be laid flat. To maximize their time in the sun, solar panels should ideally face south and tilt between 15 and 40 ...

[Flat Roof Solar Installation: Complete Guide 2025](#)

Jul 8, 2025 · Complete guide to flat roof solar installation. Learn mounting methods, costs, benefits, and find qualified installers. Expert tips included.



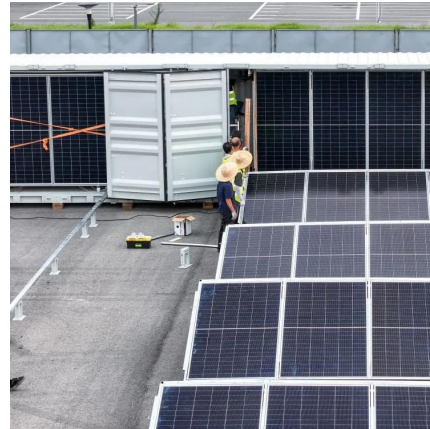
[Can you put solar panels on a flat roof?](#)

Feb 21, 2023 · Thinking of installing solar panels onto your flat roof? Find out everything you need to know here - from pros and cons, to optimum angles.



[What is the Best Angle for Solar Panels?](#)

The best angle for solar panels is typically equal to the latitude of your location. Click here to learn how to maximize solar panel efficiency.

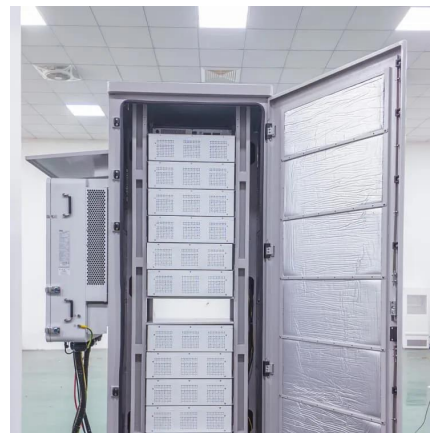


Optimizing Solar Panels on a Flat Roof: Finding the Best Tilt Angle ...

Apr 14, 2025 · Flat roofs offer unique opportunities and challenges for solar panel installations. While seemingly straightforward, maximizing energy production often involves tilting the solar ...

[Solar Panels on Flat Roofs](#)

Nov 28, 2025 · Installing solar panels on flat roofs is common, although you must consider planning permission, space, mounting angle, ballast & roof ...



[The Ultimate Guide To Flat Roof Solar Panels](#)

Jun 19, 2023 · Free-standing or Flat Roof Solar Panels are usually mounted onto a tub, weighed down by ballast (gravel, paving slabs, bricks, rocks etc).



[What Angle Should Solar Panels Be Mounted on a Flat Roof?](#)

Jul 15, 2025 · Mounting solar panels at the correct angle on a flat roof requires strong, durable support structures. Ballasted racking systems are popular because they don't penetrate the ...



[Optimizing Roof Angle And Orientation For ...](#)

May 9, 2025 · For flat roofs, installers typically set solar panels at a fixed tilt angle between 15 to 30 degrees to balance performance and structural ...

Optimizing Roof Angle And Orientation For Solar Installation

May 9, 2025 · Simple, flat roof designs offer the advantage of adjustable racks, allowing you to set the optimum tilt angle regardless of the roof's natural slope. Complex roof shapes with multiple ...



[Can you put Solar Panels on a Flat Roof?](#)

Jul 23, 2025 · We meet UK building regulations and planning rules, advise correctly on the best angle for solar panels UK-wide, and guarantee quality with accredited MCS-certified installers. ...



[Angle of solar panels on flat roof](#)

Dec 24, 2022 · We just had a solar panel install in the United Kingdom (latitude of 57 degrees). The contractor quoted us for panels installed at a standard 35 degree angle. However, the ...



Contact Us

For technical specifications, project proposals, or partnership inquiries, please visit:
<https://www.eiei.pl>

Scan QR Code for More Information



<https://www.eiei.pl>