

## **350 PV panel size**





## Overview

---

How big should a commercial solar panel be?

For commercial solar panel installations, panels often range from 400W to 600W, with dimensions of approximately 195 x 99 x 3.81 cm (6.40 x 3.25 x 0.13 feet). Several factors affect the size of a solar panel, including the type of solar cells used, the desired wattage output, your property's size and the panel's overall efficiency.

How many solar panels does a solar PV system have?

Your system may consist of 20x330W panels, resulting in a 6,600W (6.6kW) solar PV system. A solar photovoltaic (PV) system's size or capacity is the maximum amount of electricity it can produce. It isn't about the number of solar panels but the system's overall capacity. When considering a solar panel's or system's size, three things are cited:.

What are the dimensions of a 96-cell solar panel?

96-cell solar panel size. The dimensions of 96-cell solar panels are 41.5 inches long and 63 inches wide. That's a 41.5x63 solar panel.

What are the dimensions of standard solar panels?

Most solar panels are about 1.5 inches thick. The typical classification of solar panel sizes is based on the solar cell size, but it's not very useful for most calculations.



## 350 PV panel size

---



### 350 Watt Solar panels for sale , Prices, dimensions, weight, ...

2 days ago · 350 Watt Solar panels' range of prices, dimensions, sizes, voltage output, specifications datasheets



### [Jingsun New Energy , Solar Panel 350W , Solar Panel ...](#)

Jingsun New Energy and Technology Co., Ltd. Solar Panel Series Solar Panel 350W. Detailed profile including pictures, certification details and manufacturer PDF

### [Guide to Solar Panel Sizes & Dimensions \(October 2025\)](#)

May 23, 2025 · Solar panel size refers to the total amount of power a solar panel can generate over a period of time Solar panel dimensions refers to the physical size of a solar panel Solar ...



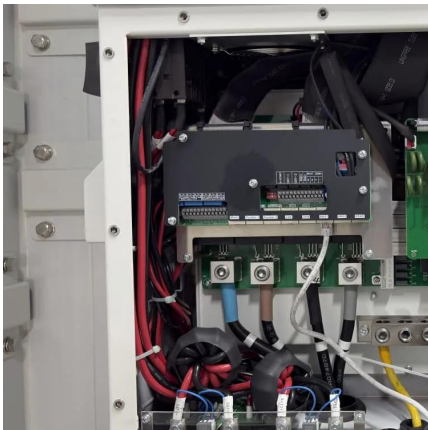
### [Solar Panel Sizes, Dimensions and Wattage](#)

Nov 27, 2022 · Traditionally, solar panels can be categorised into two sizes: 60-cell and 72-cell solar panels. The size in watts corresponds to their physical dimensions and power output. For ...



[EVERVOLT® PK Black Series Solar Module, 350W](#)

1 day ago · Panasonic EVERVOLT ® Module PK Black Series solar modules produce more power over the long haul fueled by industry-leading conversion efficiency and low degradation ...



[Solar Panel Sizes, Dimensions and Wattage](#)

Nov 27, 2022 · Traditionally, solar panels can be categorised into two sizes: 60-cell and 72-cell solar panels. The size in watts corresponds to their ...



[Standard Solar Panel Sizes And Wattages ...](#)

1 day ago · 72-cell solar panel size. The dimensions of 72-cell solar panels are as follows: 77 inches long, and 39 inches wide. That's a 77x39 solar ...





### [EVERVOLT® PK Black Series Solar Module, ...](#)

1 day ago · Panasonic EVERVOLT® Module PK Black Series solar modules produce more power over the long haul fueled by industry-leading ...

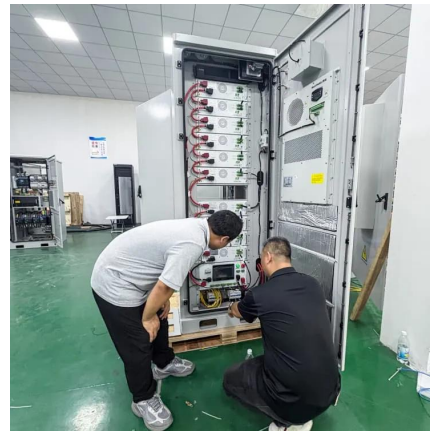


### [How big is a 350 watt solar panel? -](#)

Apr 24, 2023 · A 350-watt solar panel, therefore, is capable of producing 350 watts of electricity per hour under optimal conditions. The size of a solar panel is determined by the number of ...

### [350 photovoltaic panel size](#)

Nov 5, 2025 · A 350 watt solar panel typically measures 67 inches long and 40 inches wide, and weighs around 40 lbs. Monocrystalline modules with this wattage have 60 or 72 cells, while ...



### [Solar Panel Size & Dimensions Guide 2025](#)

Oct 7, 2025 · Solar Panel Size Fundamentals  
When discussing solar panels, the term "size" can be confusing because it refers to electrical capacity ...



## [Solar Panel Size & Dimensions Guide 2025. Complete Specs](#)

Oct 7, 2025 · Solar Panel Size Fundamentals  
When discussing solar panels, the term "size" can be confusing because it refers to electrical capacity rather than physical dimensions. Solar ...



## [Standard Solar Panel Sizes And Wattages \(100W-500W ...](#)

1 day ago · 72-cell solar panel size. The dimensions of 72-cell solar panels are as follows: 77 inches long, and 39 inches wide. That's a 77x39 solar panel; basically, a longer panel, mostly ...

### **350W Photovoltaic Panel Size: Key Considerations for Optimal Solar**

When designing solar energy systems, one question keeps popping up: "Does the physical size of a 350W photovoltaic panel significantly impact its performance?" Well, you know what they ...



## **Contact Us**

---

For technical specifications, project proposals, or partnership inquiries, please visit:  
<https://www.eiei.pl>



## Scan QR Code for More Information



<https://www.eiei.pl>