

32 battery cabinet UPS installation site





Overview

Where do I install a line-up and match Battery Cabinet?

Line-up-and-match battery cabinets are installed adjacent to the UPS. The recommended installation location is on the right side of the UPS cabinet as viewed from the front of the cabinet. See Figure 3 for line-up-and-match configuration views. Figure 3. Eaton 93PM 100 kW UPS and Two 93PM Integrated Battery Cabinets.

Where is the UPS battery cabinet located?

The recommended location is to the right of the UPS cabinet. This procedure assumes the battery cabinet is located to the right of the UPS cabinet. 21. If line-up-and-match installation, remove the rectangular knockout on the bottom front side of the UPS and the IBC (see Figure 15).

Where is the battery cabinet located?

The battery cabinet may be located to either the right or left of the UPS cabinet. The recommended location is to the right of the UPS cabinet. This procedure assumes the battery cabinet is located to the right of the UPS cabinet. 21.

How many 93pm battery cabinets can a UPS system use?

The UPS system has been evaluated for use with a maximum of four 93PM Battery Cabinets. Use of any other configuration may result in fire, death, and voiding of the warranty. Disconnect the charging source prior to connecting or disconnecting battery terminals. Determine if the battery is inadvertently grounded.



32 battery cabinet UPS installation site



[RBC32 Battery Installation Guide](#)

Note: The installation process for all models is not pictured, but the installation steps are the same for most RBC32 Compatible UPS systems.

U-ENM00044

Feb 3, 2025 · Install the battery cabinet according to the installation drawings provided. Install the battery cabinet using adjustable leveling legs to ensure the cabinet is level and stable. Ensure ...



Site Planning

Avoid direct sunlight. Do not install the UPS in environments with conductive metal scraps in the air. The optimal operating temperatures for valve-regulated lead-acid (VRLA) batteries are ...

Installation Procedure for UPS and Lithium-ion Battery Cabinets

For moving or decommissioning the UPS or the Lithium-ion battery cabinets after installation has been completed, see Decommission or Move the UPS to a New Location or Decommission or ...



[Samsung Gen 2 lithium battery cabinet site plan](#)

Mar 21, 2025 · EACH TYPE S BATTERY SYSTEM REQUIRES A MINIMUM OF ONE 400-500 VAC THREE-PHASE CIRCUIT TO PROVIDE AUXILIARY POWER TO THE SYSTEM BMS. ...



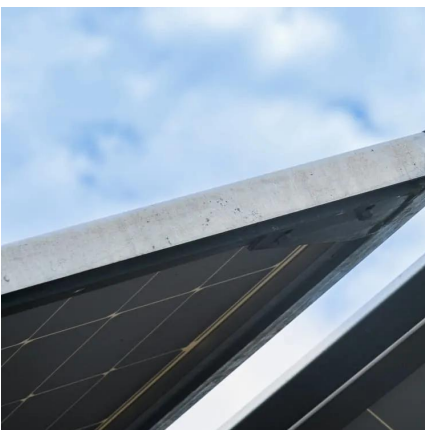
UPS Battery Cabinets

Mar 5, 2025 · Introduction This manual contains information intended to help owners and operators understand how to safely and properly prepare, install, and operate ZincFive ...



How to correctly install lithium battery energy storage cabinet?

Mar 25, 2024 · Choose the correct installation location for your lithium battery energy storage cabinet First of all, we must determine the environmental conditions of the installation site to ...





Installation specification for UPS battery cabinets and racks

Aug 7, 2024 · UPS battery cabinet and battery rack installation specifications. UPS battery cabinet is an intelligent power distribution cabinet that comprehensively collects all energy data for the ...



[Eaton 93PM Integrated Battery Cabinet- Large and Large ...](#)

Mar 31, 2025 · IMPORTANT SAFETY INSTRUCTIONS - SAVE THESE INSTRUCTIONS This manual contains important instructions that should be followed during installation and ...



[Liebert® EXS External Battery Cabinet Installer/User Guide](#)

Jan 31, 2024 · For battery cabinets that are connecting to a Vertiv™ Liebert® EXS UPS, see Figure 2.1 on page 8, cables will run from the positive, negative and neutral busbars of the ...



[How to correctly install lithium battery energy ...](#)

Mar 25, 2024 · Choose the correct installation location for your lithium battery energy storage cabinet First of all, we must determine the environmental ...





Contact Us

For technical specifications, project proposals, or partnership inquiries, please visit:
<https://www.eiei.pl>

Scan QR Code for More Information



<https://www.eiei.pl>