

# **2VUPS battery cabinet installation**





## Overview

---

Where is the UPS battery cabinet located?

The battery cabinet may be located to either the left or right of the UPS cabinet. The recommended location is to the left of the UPS cabinet. This procedure assumes the battery cabinet is located to the left of the UPS cabinet. Figure 3-2. UPS with Line-up-and-Match IBC-S.

How do I connect A Powerware 9390 ups to a battery cabinet?

Refer to the appropriate Powerware 9390 UPS Installation and Operation Manual, as referenced in paragraph 1.6, for UPS cabinet terminal locations. A UPS-to-battery wiring harness is supplied inside the first battery cabinet. Use pressure and bus bar terminations, as necessary, for connecting cables between the UPS and battery cabinet.

How do I connect a battery to a ups?

Connect and route cables from positive (+) and negative (-) terminals in the bottom of the first battery cabinet into the UPS cabinet. Connect the (+) lead to terminal E4 (+) and the (-) to terminal E5 (-) in the UPS cabinet.

How do I connect a ups to a battery cabinet?

Locate the UPS-to-battery cabinet breaker sensing cable inside the first battery cabinet. Mate the connector on this cable with the matching connector in the cabinet (see Drawing 164201536-8 on page A-17). Route the other end of this cable through conduit (top or bottom entry) to UPS cabinet and connect to terminal strip TB2.



## 2VUPS battery cabinet installation



### Classic Battery Cabinet for IEC For Galaxy VS/VL and Easy ...

Classic Battery Cabinet for IEC For Galaxy VS/VL and Easy UPS 3-Phase Modular Installation Manual

### [Position and Interconnect the Battery Cabinets](#)

Install the ten interconnection screws (five in the front and five in the rear) between the two battery cabinets. NOTE: To reach the five interconnection screws in the rear of the left-most battery ...



### [Installation Procedure for UPS with Internal Batteries](#)

Modular Battery Cabinets and Remote UPS Rated for Maximum 100 kW NOTE: The distance between the modular battery cabinet (s) and the UPS must not exceed 100 m. Contact ...

### UPS Battery Cabinets

Mar 5, 2025 · Introduction This manual contains information intended to help owners and operators understand how to safely and properly prepare, install, and operate ZincFive ...



### [How to Install and Set Up a Battery Storage Cabinet at Home](#)

Apr 19, 2025 · Discover the components and benefits of battery storage cabinet systems, including lithium-ion advantages, placement considerations, ventilation needs, and cost ...



### [BC Series UPS Battery Cabinets](#)

Jan 23, 2024 · Safety Symbols ZincFive BC Series UPS Battery Cabinet are carefully designed and manufactured to ensure that they are safe and reliable products when used properly. To ...



### [Eaton 9390 Integrated Battery Cabinet \(Models IBC-S ...\)](#)

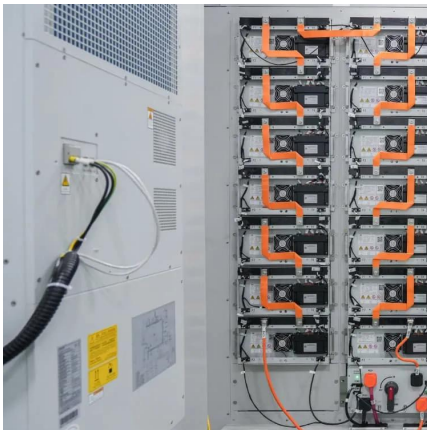
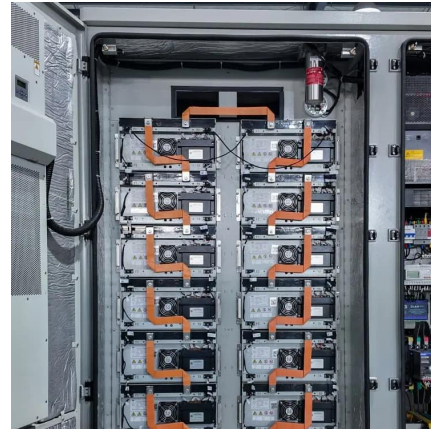
Aug 16, 2024 · The Integrated Battery Cabinet (IBC) systems are housed in single free-standing cabinets. Two models are available: Model IBC-S (small cabinet) and Model IBC-L (large ...





### [-48 VDC Battery Cabinet Installation and User Manual ...](#)

Apr 21, 2022 · Procedure Refer to Figure 3 and install the 19" or 23" relay rack mounting angles to the battery cabinet. Mounting hardware is provided with the battery cabinet. Torque these ...



### [Eaton 93PM Gen 2 UPS and Samsung Gen 3 Battery ...](#)

May 14, 2025 · The installation manuals of the UPS and battery cabinet describe how to install and operate the Eaton 93PM Gen 2 UPS and battery cabinets. Read and understand the ...

### **Installation Procedure for UPS and Lithium-ion Battery Cabinets**

For moving or decommissioning the UPS or the Lithium-ion battery cabinets after installation has been completed, see Decommission or Move the UPS to a New Location or Decommission or ...



## **Contact Us**

---

For technical specifications, project proposals, or partnership inquiries, please visit:  
<https://www.eiei.pl>



## Scan QR Code for More Information



<https://www.eiei.pl>