

12v200A battery and inverter





Overview

How do I choose the right inverter size for my 200Ah lithium battery?

When it comes to choosing the right inverter size for your 200Ah lithium battery, there are a few factors you'll need to consider. The first is the power needs of the devices you plan on running off the inverter. Take into account their wattage requirements and how many devices will be connected at once.

What is a 12V 220V power inverter?

This inverter 12V 220V generates 1000-watt continuous and 2000-watt surge power which can be applicable for AC household appliances or electrical devices during work trips, road trips, camping, and so on. This power inverter has full safety protections, built-in fuses, and a temperature-controlled cooling fan, to protect your devices from damage.

How do I choose a battery inverter?

Additionally, pay attention to the voltage compatibility between your battery and the chosen inverter. Ensure they are both compatible (most inverters work with standard 12V batteries) and match each other's specifications for optimal performance.

Should I buy a larger inverter?

A larger inverter may seem tempting, but if it exceeds the capacity of your battery, it can drain the battery quickly and reduce its lifespan. So, calculate your power requirements carefully before making a purchase. Additionally, consider investing in a high-quality pure sine wave inverter.



12v200A battery and inverter



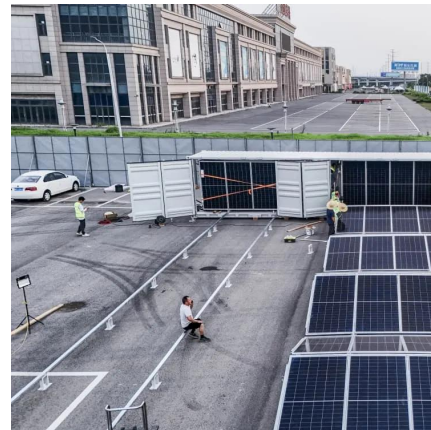
[What Size Inverter Do I Need for a 200Ah](#)

...

Apr 13, 2024 · How do you determine the right size inverter for a 200Ah lithium battery? The ideal inverter size depends on your power needs and ...

[Sunpal 200ah 200A 12V Battery Lithium Ion ...](#)

3 days ago · Sunpal storage battery factory was founded in 1998, covered 150, 000 square meters, annual throughput reaches 920, 000kwh. Over ...



[Which Inverter is Suitable for a 200Ah Battery?](#)

Apr 23, 2025 · Discover Which Inverter is Suitable for a 200Ah Battery? Including recommendations based on power requirements, runtime, and efficiency for different types of ...

[Best Inverter for 200Ah Battery: A Complete Guide 2025](#)

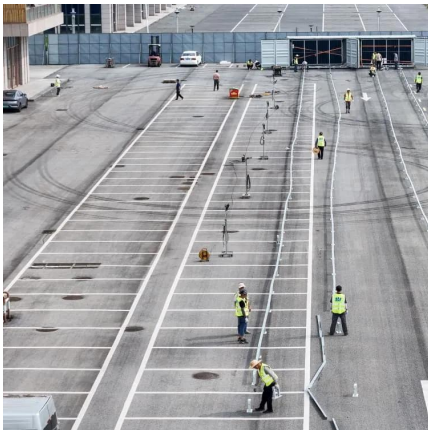
Apr 16, 2025 · Find the best inverter for your 200Ah battery setup. Compare top models, get expert tips, and shop reliable inverters for RVs, homes, and off-grid use.



[What Size Inverter Can I Run Off a 200Ah](#)

...

Aug 20, 2025 · You can run an inverter rated between 1500W and 2400W off a 200Ah lithium battery depending on voltage and usage. Typically, a 12V ...



[Which Inverter is Suitable for a 200Ah Battery?](#)

Apr 23, 2025 · Discover Which Inverter is Suitable for a 200Ah Battery? Including recommendations based on power requirements, runtime, and ...



12V 200Ah LiFePO4 Lithium Battery Built-in 200A BMS Up to ...

Jan 16, 2025 · 12v Deep Cycle Battery: 200Ah Lifepo4 battery have extended cycle life. 12v 200ah battery can withstand a high number of charge-discharge cycles, offering 4000 cycles at 100% ...





[Which Inverter is Best for 200Ah Battery?](#)

Nov 20, 2025 · Find out which inverter works best with a 200Ah battery for reliable backup and efficient performance. This guide explains ideal inverter types, supported loads, and smart ...



[What Size Inverter Do I Need for a 200Ah Lithium Battery](#)

Apr 13, 2024 · How do you determine the right size inverter for a 200Ah lithium battery? The ideal inverter size depends on your power needs and the battery's voltage and capacity. For a 12V ...

[12V 200Ah LiFePO4 Lithium Battery Built-in ...](#)

Jan 16, 2025 · 12v Deep Cycle Battery: 200Ah Lifepo4 battery have ...



[Choosing the Best Inverter Size for a 200Ah ...](#)

Jun 7, 2025 · To calculate the wire and fuse size needed for the inverter you would take the inverter wattage, divide by 12V, then divide by 85% ...



G12V200AH

By using strong grids and specially designed active material, the DC series battery offers 30% more cyclic life than the standby series. It is suitable for ...

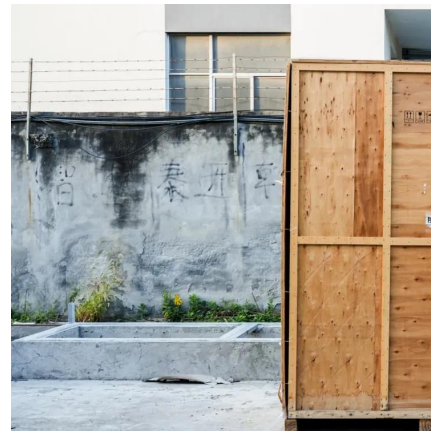


[Best 200ah Battery For Inverter \[Updated: December 2025\]](#)

Aug 23, 2025 · As the sunny season of summer approaches, having a reliable battery for your inverter becomes especially important. I've personally tested several 200Ah

[Choosing the Best Inverter Size for a 200Ah Lithium Battery](#)

Jun 7, 2025 · To calculate the wire and fuse size needed for the inverter you would take the inverter wattage, divide by 12V, then divide by 85% efficiency.



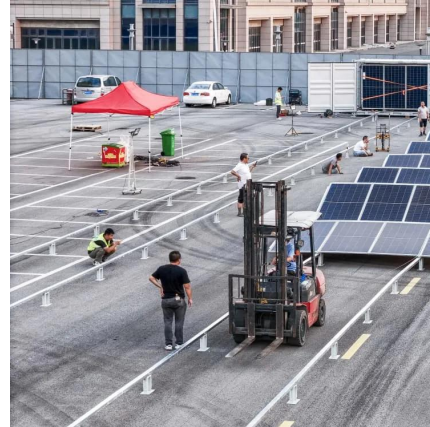
G12V200AH

By using strong grids and specially designed active material, the DC series battery offers 30% more cyclic life than the standby series. It is suitable for solar energy systems, marine and RV ...



Sunpal 200ah 200A 12V Battery Lithium Ion Inverter Battery ...

3 days ago · Sunpal storage battery factory was founded in 1998, covered 150, 000 square meters, annual throughput reaches 920, 000kwh. Over the years, our factory is focusing on ...



[What Size Inverter Can I Run Off a 200Ah Lithium Battery?](#)

Aug 20, 2025 · You can run an inverter rated between 1500W and 2400W off a 200Ah lithium battery depending on voltage and usage. Typically, a 12V 200Ah battery supports up to about ...

Contact Us

For technical specifications, project proposals, or partnership inquiries, please visit:
<https://www.eiei.pl>

Scan QR Code for More Information



<https://www.eiei.pl>