

12v to 220v inverter s impact on the car





Overview

How does a power inverter affect a car?

One of the most important factors is the size of the inverter. A larger inverter will draw more power from the car's battery and can therefore have a greater impact on the car's electrical system. Another factor that can affect the impact of power inverters on cars is the age and condition of the car's battery.

Can you use a power inverter while a car is off?

However, using a power inverter while the car is turned off can quickly drain the battery and cause it to discharge beyond 12 volts, which is considered dead and requires jump-starting. Therefore, it is important to choose a power inverter that is appropriate for the car's battery capacity and to use it responsibly. What is a Power Inverter?

.

How to choose a power inverter?

As mentioned in the search results, it is important to choose a power inverter that matches your car battery's capacity. Additionally, it is recommended to use the power inverter while the car is running to avoid draining the battery.

Are power inverters safe to use in cars?

While power inverters are generally safe to use, there are certain risks associated with using them in cars that you should be aware of. One of the potential risks of using power inverters in cars is that they can drain the car battery if used for an extended period.



12v to 220v inverter s impact on the car



[Understanding How Power Inverters Impact Car Batteries: ...](#)

Jul 26, 2024 · Discover the truth about power inverters and car batteries! Learn that inverters do not drain car batteries continuously, but usage depends on connected devices. Unveil vital tips ...

[Best 12V to 220V Power Inverters for Cars, Homes, and ...](#)

Sep 6, 2025 · Power inverters convert DC power from a 12V battery source into usable AC power at 220V, making them essential for cars, RVs, and off-grid applications. This article reviews ...



[The Harm of 12V to 220V Car Inverters to Vehicles](#)

A properly designed 12V to 220V inverter will not damage the car battery, but overloading it can harm the vehicle. A car inverter is connected to the car's cigarette lighter and functions to ...

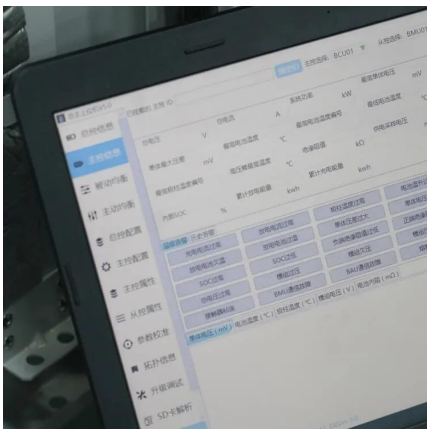
[Best 12V to 220V Power Inverters for Cars, ...](#)

Sep 6, 2025 · Power inverters convert DC power from a 12V battery source into usable AC power at 220V, making them essential for cars, RVs, and ...



Are Inverters Hard On Battery Life? Their Impact On Your Car ...

Mar 29, 2025 · Yes, inverters can be hard on battery life. A 12V car battery should stay above 10.5V. Long inverter usage can lead to car battery discharge and reduce lifespan, especially ...



[Does the Car Inverter Damage the Car? Inverter](#)

Jun 20, 2022 · As people spend more and more time in the car, the requirements for automotive electrical appliances also increase. Therefore, the ordinary 12V power supply is unable to ...



[Inverter for Car: Everything You Need to Know Before You ...](#)

Jun 17, 2025 · When you're on the road and need a way to power your laptop, charge your phone, or even brew a cup of coffee, an inverter for car becomes more than just a handy gadget--it's ...





[Is Car Inverter Harmful to the Battery?](#)

Car inverter can turn 12V into 220V. The inverter is still quite useful, but many people worry about car inverter will be harmful to the car battery. As long as the battery is used in automotive ...



Best 12V to 220V Power Inverters for Cars, RVs, and Solar ...

Oct 5, 2025 · Finding the right power inverter to convert 12V DC to 220V AC is essential for powering electronics from a vehicle or off-grid solar source. This guide covers top 5 reliable ...

[Best 12V to 220V Power Inverters for Cars, ...](#)

Oct 5, 2025 · Finding the right power inverter to convert 12V DC to 220V AC is essential for powering electronics from a vehicle or off-grid solar ...



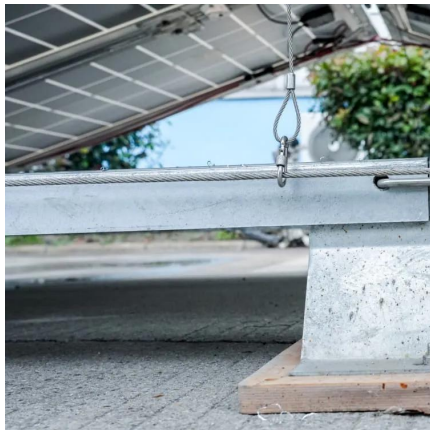
[Are Power Inverters Bad For Your Car? Here's ...](#)

Aug 29, 2023 · Power inverters are devices that convert DC (direct current) power from a car battery into AC (alternating current) power that can be ...



[Will a Power Inverter Damage My Car? - leaptrend](#)

Jun 26, 2025 · How Car Power Inverters Work A car power inverter converts your car's 12V DC battery power into 110V/220V AC--just like household electricity. Here's the step-by-step ...



[Is Car Inverter Harmful to the Battery?](#)

Car inverter can turn 12V into 220V. The inverter is still quite useful, but many people worry about car inverter will be harmful to the car battery. As long ...

[Are Power Inverters Bad For Your Car? Here's What You ...](#)

Aug 29, 2023 · Power inverters are devices that convert DC (direct current) power from a car battery into AC (alternating current) power that can be used to run various electronic devices. ...



Contact Us

For technical specifications, project proposals, or partnership inquiries, please visit:
<https://www.eiei.pl>



Scan QR Code for More Information



<https://www.eiei.pl>