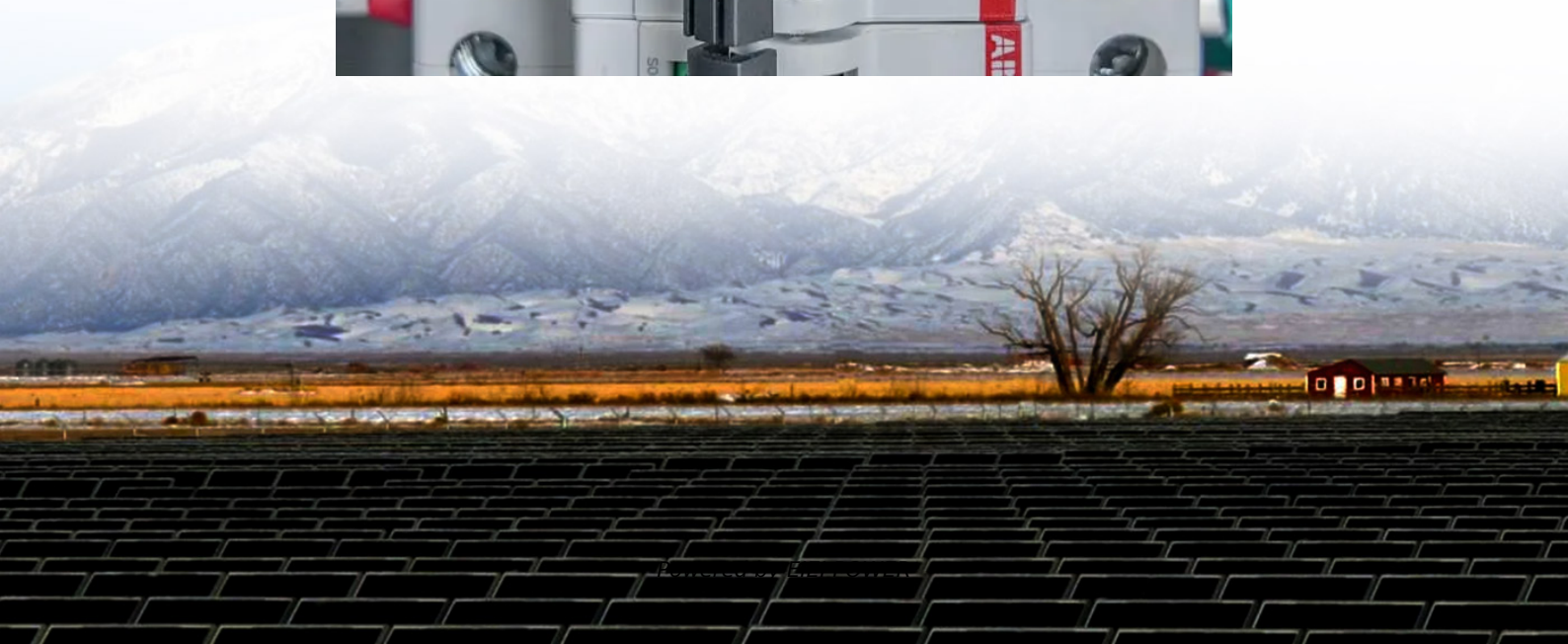
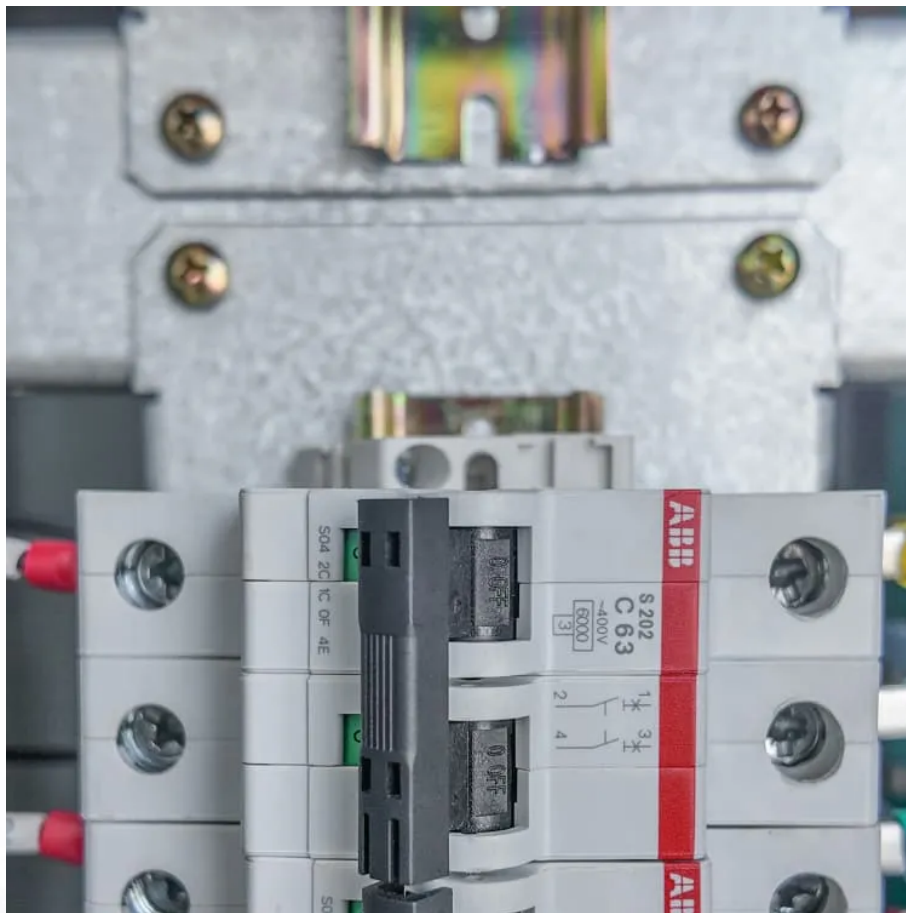


# 12V solar container lithium battery pack in parallel





## Overview

---

How to connect lithium solar batteries in parallel?

**Connecting Lithium Solar Batteries in Parallel:** When connecting batteries in parallel, the positive terminals are connected together, and the negative terminals are connected together. The ampere-hour capacity of the individual batteries adds up, while the total voltage remains the same as the individual batteries.

How to connect lithium solar batteries in series?

**Connecting Lithium Solar Batteries in Series:** To connect lithium solar batteries in series, you simply link the negative pole of one battery to the positive pole of the next battery. This ensures that the same current flows through all the batteries. The total voltage of the series connection is the sum of the individual voltages.

How many batteries can a 48V 100Ah battery connect in parallel?

For instance, connecting two 48V 100Ah batteries in parallel will give you a battery with a capacity of 200Ah, while maintaining the same voltage. It's crucial to connect batteries of the same voltage and energy density in parallel.

**Connecting Lithium Solar Batteries in Series:.**

Why do solar batteries need parallel connections?

Parallel connections allow for a more even discharge of batteries, which can enhance the lifespan of each unit by preventing over-discharge in any single battery. Understanding these elements of solar batteries equips you with the knowledge to optimize your solar energy system effectively.



## 12V solar container lithium battery pack in parallel

---



### Paralleling Lithium Batteries in Solar Systems: Principles, ...

Sep 15, 2025 · This is also the core difference between parallel and series connection of lithium batteries in solar systems: series connection increases voltage (for example, two 12V battery ...

### [Lithium Solar Batteries Series vs Parallel Connection](#)

Apr 27, 2025 · Lithium solar batteries are essential components of solar energy systems, providing reliable energy storage for various applications. Understanding how to connect these ...



### [Lithium Solar Batteries Series vs Parallel](#)

Apr 27, 2025 · Lithium solar batteries are essential components of solar energy systems, providing reliable energy storage for various ...

### [How to Balance Lithium Batteries with Parallel ...](#)

Sep 1, 2023 · A parallel BMS regulates the current flow between 2 or multiple batteries connected in parallel, learn how it works and how to connect it.



## 12V Solar Batteries in Parallel-Ritar International Group Limited

Jun 9, 2025 · This helps to optimize the performance and lifespan of the battery bank, ensuring that all batteries operate efficiently and last longer. Despite the challenges, connecting 12V ...

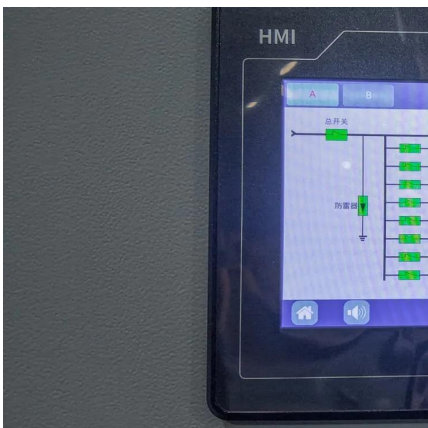
## [Batteries in Series vs Parallel: Understand The Differences](#)

Nov 18, 2025 · Did you know that wiring two 24V batteries in series gives you 48V, while connecting them in parallel keeps it at 12V but doubles the capacity? Or that parallel ...



## [How to Connect Solar Batteries in Parallel for ...](#)

Oct 26, 2024 · Unlock the full potential of your solar energy system by learning how to connect solar batteries in parallel. This comprehensive ...







## [Guide to 12V Rechargeable Lithium-Ion Solar Batteries](#)

Jun 25, 2025 · High-quality 12V rechargeable lithium-ion solar batteries and chargers deliver unmatched performance, safety, and ROI for B2B applications. Ready to elevate your power ...



## [Can You Mix Different Capacity Lithium](#)

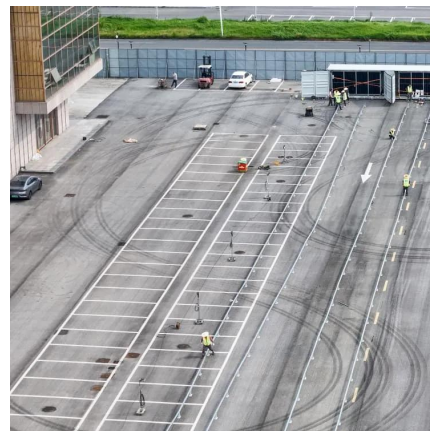
...

Jun 20, 2023 · Yes, you can mix different capacity lithium batteries, whether a normal 12V 100Ah battery or a Lithium server rack battery. You can

...

## [Can You Mix Different Capacity Lithium Batteries?](#)

Jun 20, 2023 · Yes, you can mix different capacity lithium batteries, whether a normal 12V 100Ah battery or a Lithium server rack battery. You can combine different capacity batteries in ...



## [How to Balance Lithium Batteries with Parallel BMS?](#)

Sep 1, 2023 · A parallel BMS regulates the current flow between 2 or multiple batteries connected in parallel, learn how it works and how to connect it.



## [How to Connect Lithium Solar Batteries in Series & Parallel](#)

May 5, 2024 · Connecting lithium solar batteries in series or parallel is essential for customizing energy storage systems. In a series connection, the voltage increases while the capacity ...



## [Guide to 12V Rechargeable Lithium-Ion Solar ...](#)

Jun 25, 2025 · High-quality 12V rechargeable lithium-ion solar batteries and chargers deliver unmatched performance, safety, and ROI for B2B ...

## [Series vs Parallel: Wiring a 12V 100Ah Lithium Battery](#)

Oct 22, 2025 · This is a key consideration in larger home battery storage systems. Comparing Series and Parallel Connections The choice between series and parallel wiring depends ...



## [How to Connect Lithium Solar Batteries in ...](#)

May 5, 2024 · Connecting lithium solar batteries in series or parallel is essential for customizing energy storage systems. In a series connection, ...



## [How to Connect Solar Batteries in Parallel for Maximum ...](#)

Oct 26, 2024 · Unlock the full potential of your solar energy system by learning how to connect solar batteries in parallel. This comprehensive guide explores the benefits of increased ...



## Contact Us

---

For technical specifications, project proposals, or partnership inquiries, please visit:  
<https://www.eiei.pl>

## Scan QR Code for More Information



<https://www.eiei.pl>