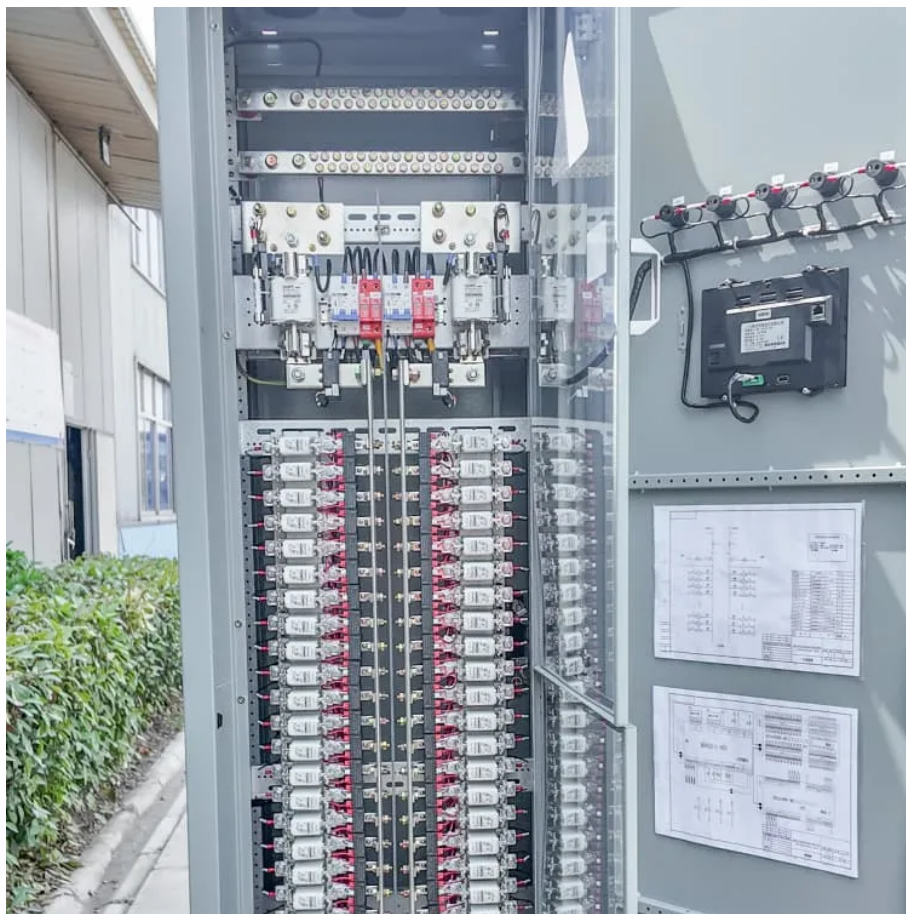


12V inverter needs the smallest





Overview

What is the smallest size inverter?

Inverters add load to the electrical system, even with no connected appliances. The larger the inverter, the greater the base load. So, it's a complete waste to install an oversized inverter for your needs. The smallest size inverter is one that can run your most powerful AC with no other load. Why is the maximum inverter size sometimes so large?

.

What size inverter do I Need?

The inverter size calculator takes the guesswork out of choosing the right inverter. Simply select your appliances below, and you'll instantly see the inverter size you need. Standard 12v models top out around 3000w (24v/48v ~ 4000w). To proceed: Upgrade to a higher-voltage system (24 V/48 V) for a larger inverter.

What are the different solar inverter sizes?

Solar generators range in size from small generators for short camping trips to large off-grid power systems for a boat or house. Consequently, inverter sizes vary greatly. During our research, we discovered that most inverters range in size from 300 watts up to over 3000 watts. In this article, we guide you through the different inverter sizes.

What happens if a battery inverter is too small?

Your inverter converts your battery's DC power into the AC power that appliances use. Getting this size right directly impacts how smoothly your electrical setup works. If your inverter is too small, your appliances either won't run or will cut out when you try to use them.



12V inverter needs the smallest



[What is the size of an Inverter 220V TO 12V?](#)

Choosing the Right Size Inverter When it comes to choosing the right size of a 220V to 12V inverter, you need to consider the power requirements of the devices you want to run. First, ...

[How to Determine the Right Inverter Size For Your ...](#)

This number will be the smallest inverter that could possibly suit your needs, so it's a good idea to add between 10 and 20 percent on top and then buy an inverter that size or larger. Some ...



What Size Inverter Do I Need? A Comprehensive Guide to Inverter ...

Oct 29, 2025 · Choosing the right inverter size is one of the most important decisions when designing a reliable and efficient power system. So, what size inverter do I need? This ...

[What Size Inverter Do I Need ?A Complete Guide to ...](#)

Jun 12, 2025 · Discover how to select the perfect inverter size for your solar or backup power system. Learn to calculate power requirements, account for surge loads, match battery ...



[Inverter Size Calculator , Find Your Perfect Power Match](#)

Apr 25, 2025 · Inverters add load to the electrical system, even with no connected appliances. The larger the inverter, the greater the base load. So, it's a complete waste to install an ...



What Size Inverter Do I Need to Run a Fridge, Kettle, or ...

Jul 14, 2025 · Choosing the right inverter size is essential to safely and efficiently power your appliances while camping, touring, or living off-grid. In this guide, we'll break down the inverter ...



[Inverter Size Calculator](#)

Learn how to calculate the required size of an inverter with our in-depth guide. We provide a handy formula, examples, and answers to common questions to help you make the right ...





[Best Sized Inverter For 12 Volt Battery ...](#)

Jul 6, 2025 · BESTEK 500W Power Inverter DC 12V to 110V AC Converter - Best for moderate power output from 12V batteries Battery Tender 200 ...



[What Size Inverter Do I Need ?A Complete ...](#)

Jun 12, 2025 · Discover how to select the perfect inverter size for your solar or backup power system. Learn to calculate power requirements, account ...

[Best Small 12v Inverter \[Updated: December 2025\]](#)

Aug 3, 2025 · No, a small 12V inverter may not meet your continuous power needs. A small 12V inverter typically has a limited power capacity, often ranging from 150 to 1000 watts.



[The Only Inverter Size Chart You'll Ever Need](#)

Sep 25, 2023 · We have created a comprehensive inverter size chart to help you select the correct inverter to power your appliances.



[The Only Inverter Size Chart You'll Ever Need](#)

How to Determine What Size Inverter I Need? What Are The Two Types of Power loads? Inverter Size Chart What Will A 300W Inverter Run? What Will A 500W Inverter Run? What Will A 700W Inverter Run? What Will A 1000W Inverter Run? What Will A 1500W Inverter Run? What Will A 2000W Inverter Run? What Will A 3000W Inverter Run? Before we go any further, we highly recommend that you choose a pure sine wave inverter. This type of inverter delivers high-quality electricity, similar to your utility company. This way, none of your appliances run the risk of being damaged. Now, when it comes to sizing your inverter, you always need to check your appliances' wattage and ensure t See more on climatebiz starpoweradvancesolarartechology



What Size Inverter Do I Need to Run a Fridge, Kettle, or ...

Jul 14, 2025 · Choosing the right inverter size is essential to safely and efficiently power your appliances while camping, touring, or living off-grid. In this guide, we'll break down the inverter ...



[Best Sized Inverter For 12 Volt Battery \[Updated On: ...](#)

Jul 6, 2025 · BESTEK 500W Power Inverter DC 12V to 110V AC Converter - Best for moderate power output from 12V batteries Battery Tender 200 Watt Power Inverter - 12 Volt DC to 115 - ...

[What is the size of an Inverter 220V TO 12V?](#)

Choosing the Right Size Inverter When it comes to choosing the right size of a 220V to 12V inverter, you need to consider the power requirements of ...



Contact Us

For technical specifications, project proposals, or partnership inquiries, please visit:
<https://www.eiei.pl>

Scan QR Code for More Information



<https://www.eiei.pl>