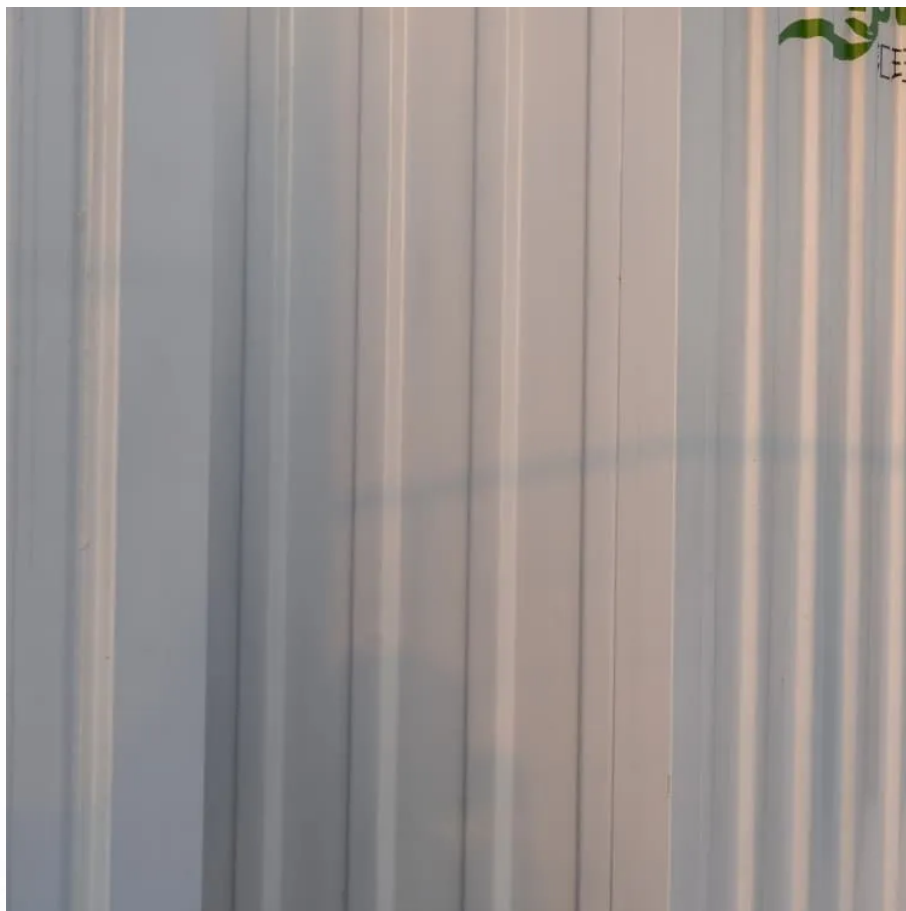


# 10kw inverter specifications





## Overview

---

What is the input voltage range for a 10kW inverter?

Input voltage ranges for 10kW inverters commonly center around 48V DC systems, though some models accommodate 24V or higher voltage configurations.

What type of output does a 10kW inverter provide?

Output configurations vary based on application needs. Most residential 10kW inverters provide 120V/240V split-phase output, delivering both standard household voltage (120V) and high-voltage power (240V) for large appliances. Commercial applications may require 208V three-phase output for industrial equipment compatibility.

What is the efficiency rating of a 10kW inverter?

Efficiency ratings for modern 10kW inverters typically range from 92% to 97.6%. Higher efficiency means less energy lost as heat during the DC-to-AC conversion process, resulting in more usable power and reduced operating costs. Premium models with advanced power electronics and optimized designs achieve the highest efficiency ratings.

How much does a 10kW inverter cost?

The ExpertPower 10kW inverter at \$2,399 provides exceptional solar input capacity with 12kW PV handling capability. This 120% DC oversizing maximizes energy harvest during partial shading or low-light conditions, improving overall system performance. Parallel operation up to 60kW total capacity offers excellent scalability for growing energy needs.



## 10kw inverter specifications

---

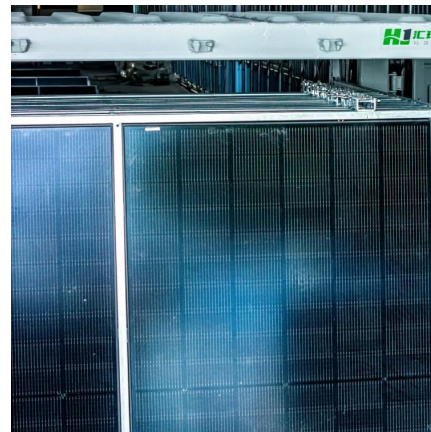


### [5-10kW Low voltage pv string inverter\\_Residential inverters](#)

S5-GR3P (5-10)K-LV three-phase series string inverter are reliable preferred equipment for residential, small industrial and commercial pv power stations. Smaller size, higher efficiency, a ...

### [Growatt 10kW Grid-Tie Inverter , MIN10000TL ...](#)

Growatt 10kW Grid-Tie Inverter offers robust reliability for seamless integration into solar power systems, ensuring efficient and consistent ...



### [10kW Inverters: Complete Guide To Choosing & Installing ...](#)

Nov 17, 2025 · Typical 10kW inverters accept 150-500V DC input, requiring 4-12 panels per string depending on panel specifications and temperature coefficients. Shading and performance ...

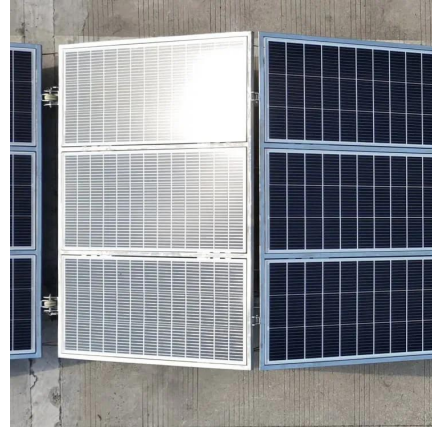


### [Design considerations of a 10kW single-phase string ...](#)

Mar 21, 2025 · Figure 2 illustrates the 10kW, GaN-Based Single-Phase String Inverter with Battery



Energy Storage System Reference Design,  
including all active and passive components.



### [1 10kW Inverter tech specs](#)

Oct 10, 2025 · 10kW Inverter tech  
specsH4V10000

### [X3 Genki 10kW Hybrid Inverter](#)

Jul 29, 2025 · X3 Genki 10kW Hybrid Inverter  
features 200% PV oversizing, smart load  
management, IP65 protection, and optional AFCI  
for reliable, flexible solar energy solutions.



### [NITROX HYBRID Flyer 10KW](#)

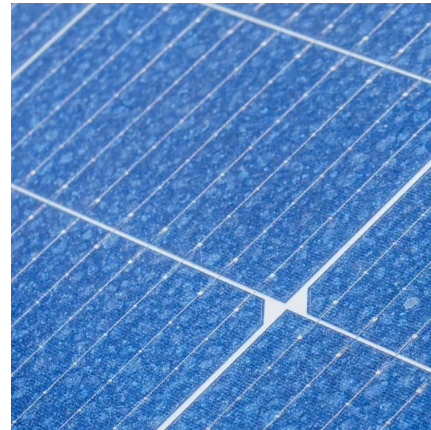
Mar 17, 2025 · Operating Temperature Range  
(oC) Permissible Ambient Humidity Permissible  
Altitude Noise (dB) Ingress Protection(IP) Rating  
Inverter Topology Over Voltage Category ...





### [Growatt MOD 10~15KTL3-X2021.11.2.cdr](#)

Feb 15, 2023 · For Belgium C10/C11, MOD 10KTL3-X max. output power is limit to 10000VA. The AC voltage range and frequency range may vary depending on specific country grid standard. ...



### [Growatt SPH 10000 TL3-BH-UP , Hybryd 3-Phase inverter](#)

Growatt SPH TL3-BH-UP is three-phase hybrid inverter designed for residential and small industrial applications. Available capacities: 4kW, 5kW, 6kW, 7kW, 8kW, 10kW. A properly ...

### [Growatt SPH 10000 TL3-BH-UP , Hybryd 3 ...](#)

Growatt SPH TL3-BH-UP is three-phase hybrid inverter designed for residential and small industrial applications. Available capacities: 4kW, ...



### [Growatt 10kW Grid-Tie Inverter , MIN10000TL-XH-US](#)

Growatt 10kW Grid-Tie Inverter offers robust reliability for seamless integration into solar power systems, ensuring efficient and consistent energy conversion.



### [5-10kW Low voltage pv string ...](#)

S5-GR3P (5-10)K-LV three-phase series string inverter are reliable preferred equipment for residential, small industrial and commercial pv power ...



### **PVI 10KW**

Aug 1, 2022 · Popular among schools and small business customers, Solectria Renewables' PVI 10KW, PVI 13KW, and PVI 15KW inverters are the smallest true three-phase PV Inverter ...

## **Contact Us**

---

For technical specifications, project proposals, or partnership inquiries, please visit:  
<https://www.eiei.pl>



## Scan QR Code for More Information



<https://www.eiei.pl>