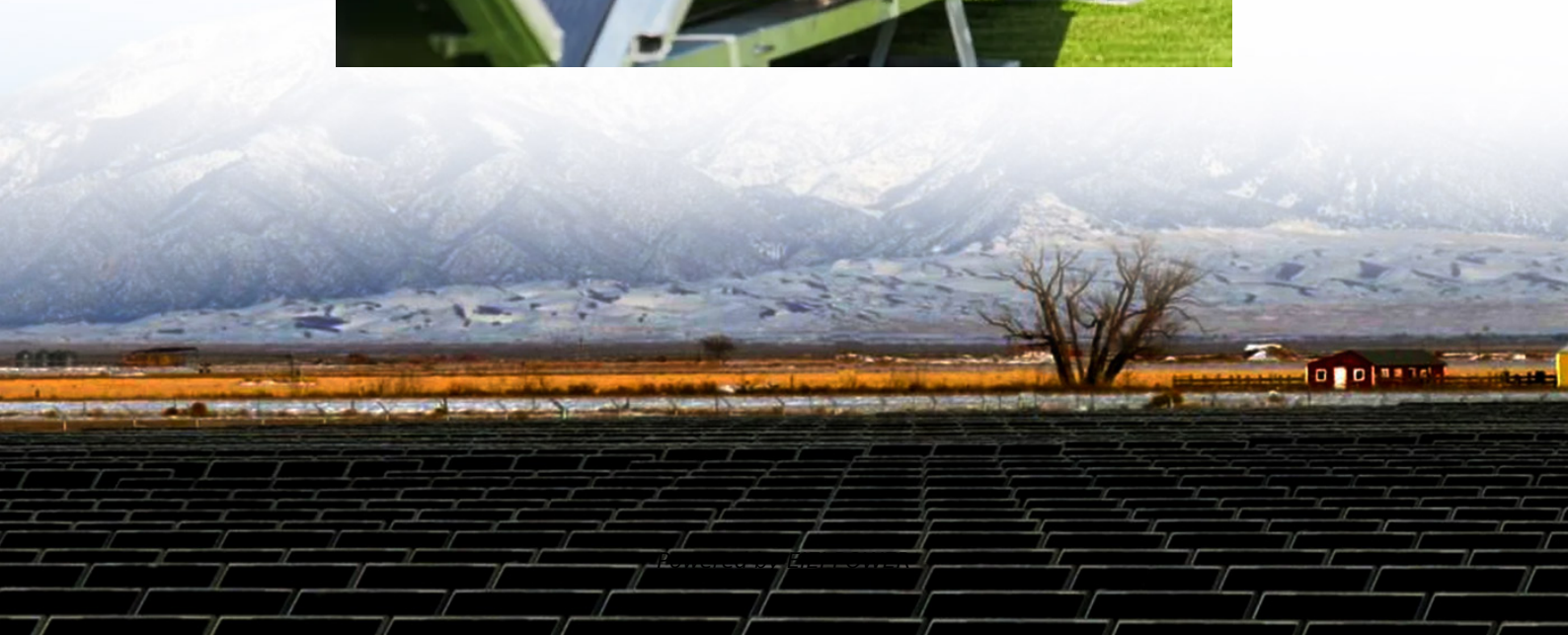


10kWh lithium iron phosphate battery energy storage





Overview

What is a 50kw-300kw lithium energy storage system?

A 50KW-300KW lithium energy storage system consists of 48-volt modules with capacities ranging from 100Ah to 400Ah. These systems can be paralleled up to 14 units if a larger battery storage system is required.

What is the home battery 10kwh 48V 200Ah storage system?

The home battery 10kwh 48v 200ah storage system is a wall mounted Lithium battery storage system. It is based on 16S2P 3.2v 100Ah Lithium iron phosphate battery cells. Battery system design for wall mounted installation.

Are lithium iron phosphate batteries the future of solar energy storage?

Let's explore the many reasons that lithium iron phosphate batteries are the future of solar energy storage. Battery Life. Lithium iron phosphate batteries have a lifecycle two to four times longer than lithium-ion. This is in part because the lithium iron phosphate option is more stable at high temperatures, so they are resilient to over charging.

What are lithium iron phosphate batteries (LiFePO4)?

However, as technology has advanced, a new winner in the race for energy storage solutions has emerged: lithium iron phosphate batteries (LiFePO4). Lithium iron phosphate use similar chemistry to lithium-ion, with iron as the cathode material, and they have a number of advantages over their lithium-ion counterparts.



10kWh lithium iron phosphate battery energy storage



Deep Cycle Lifepo4 Battery Powerwall 10KWH 48v 200AH Storage ...

10KWH Battery Powerwall The home battery 10kwh 48v 200ah storage system is a wall mounted Lithium battery storage system. It is based on 16S2P 3.2v 100Ah Lithium iron phosphate ...

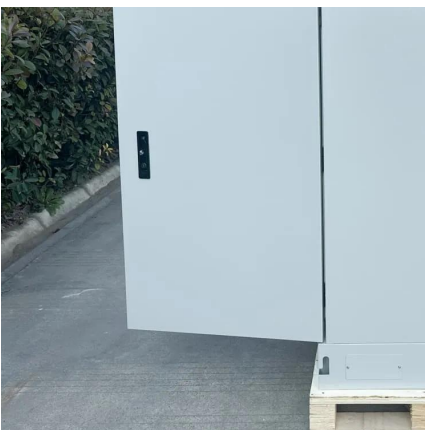
[10KWH Wall-Mounted LiFePO4 Lithium Iron ...](#)

Apr 8, 2023 · Lithium battery systems are widely used in residential energy storage systems, such as solar energy storage systems and UPS. The ...



LFP-10 MAX Battery , Efficient Solar Storage , Fortress Power

The LFP-10 MAX delivers reliable energy storage with safe lithium iron phosphate technology in a compact, easy-to-install design.



[Lithium Iron Phosphate Battery, 10kWh Home Battery 48v ...](#)

Nov 12, 2025 · The GSL-051200A-B-GBP2 10kWh Wall Mounted Lithium Iron Phosphate Battery



(LiFePO4) is a solar energy storage battery designed for residential energy storage, providing ...



[10kWh Lithium Iron Phosphate Battery Storage System](#)

Oct 24, 2025 · CXJPowers is a top home battery storage supplier & ESS battery manufacturer, specializing in the R& D, production and sales of solar energy storage batteries, All-in-one ...



GSL-051200A-B-GBP2 10 kWh Wall-Mounted Lithium Iron Phosphate Battery

Discover the GSL-051200A-B-GBP2, a powerful 10 kWh wall-mounted lithium iron phosphate battery designed for efficient energy storage. With a voltage of 51.2V and a capacity of 200AH, ...



[GSL-051200A-B-GBP2 10 kWh Wall-Mounted ...](#)

Discover the GSL-051200A-B-GBP2, a powerful 10 kWh wall-mounted lithium iron phosphate battery designed for efficient energy storage. With a ...





[Deep Cycle Lifepo4 Battery Powerwall 10KWH 48v 200AH ...](#)

10Kwh Battery Powerwall Day Or Night, 10Kwh Power Wall Always Have Backup Power Smartest Battery Management System Highlights Strong & Durable Structure The EG Solar Lithium Battery is a 10 kWh 48V Lithium Iron Phosphate(LFP) Battery with a built-in battery management system and an LCD screen that integrates and displays multilevel safety features for excellent performance. The EG Solar Lithium Battery is maintenance-free and easy to integrate with solar or for independent operation to deliver power See more on osmbattery Capacity Ah: 200Ah Suggested SOC: 5%~100% Capacity Energy: 10.24 kWh Availability: In stock SRNE Solar



Empowering Energy Resilience: The 10kWh ...

Explore how the 10kWh Energy Storage Lithium Battery facilitates peak shaving, demand response, and uninterrupted power supply, providing ...



[LFP-10 MAX Battery , Efficient Solar Storage](#)

The LFP-10 MAX delivers reliable energy storage with safe lithium iron phosphate technology in a compact, easy-to-install design.

Lithium Iron Phosphate Battery, 10kWh Home Battery 48v 200Ah , GSL Energy

Nov 12, 2025 · The GSL-051200A-B-GBP2 10kWh Wall Mounted Lithium Iron Phosphate Battery



(LiFePO4) is a solar energy storage battery designed for residential energy storage, providing ...



Empowering Energy Resilience: The 10kWh Energy Storage Lithium Battery

Explore how the 10kWh Energy Storage Lithium Battery facilitates peak shaving, demand response, and uninterrupted power supply, providing greater control over energy usage and ...

Lithium Iron Phosphate Battery 10kwh Solar Panel Energy Storage

...

Nov 21, 2025 · The 48V 200Ah low-voltage lithium iron phosphate battery (hereinafter referred to as "the battery") has the characteristics of strong voltage adaptability, large capacity (48V × ...



10KWH Wall-Mounted LiFePO4 Lithium Iron Phosphate Battery for battery

Apr 8, 2023 · Lithium battery systems are widely used in residential energy storage systems, such as solar energy storage systems and UPS. The power wall LiFePO4 battery pack adopts the ...





How to Choose the Best LiFePO4 Battery 10kWh for Home Energy Storage

4 days ago · A 10kWh LiFePO4 (Lithium Iron Phosphate) battery is a deep-cycle energy storage unit designed primarily for residential solar energy systems, backup power, and off-grid ...



[10KWH LiFePO4 Powerwall Mounted Energy Storage System](#)

1 day ago · 10KWH LiFePO4 Powerwall Mounted Energy Storage System Enhance your energy infrastructure with the 10KWH LiFePO? Powerwall Mounted Energy Storage System from ...

Contact Us

For technical specifications, project proposals, or partnership inquiries, please visit:
<https://www.eiei.pl>

Scan QR Code for More Information



<https://www.eiei.pl>